

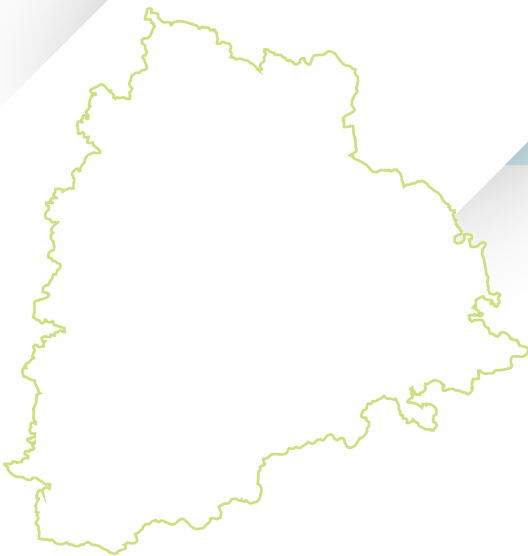
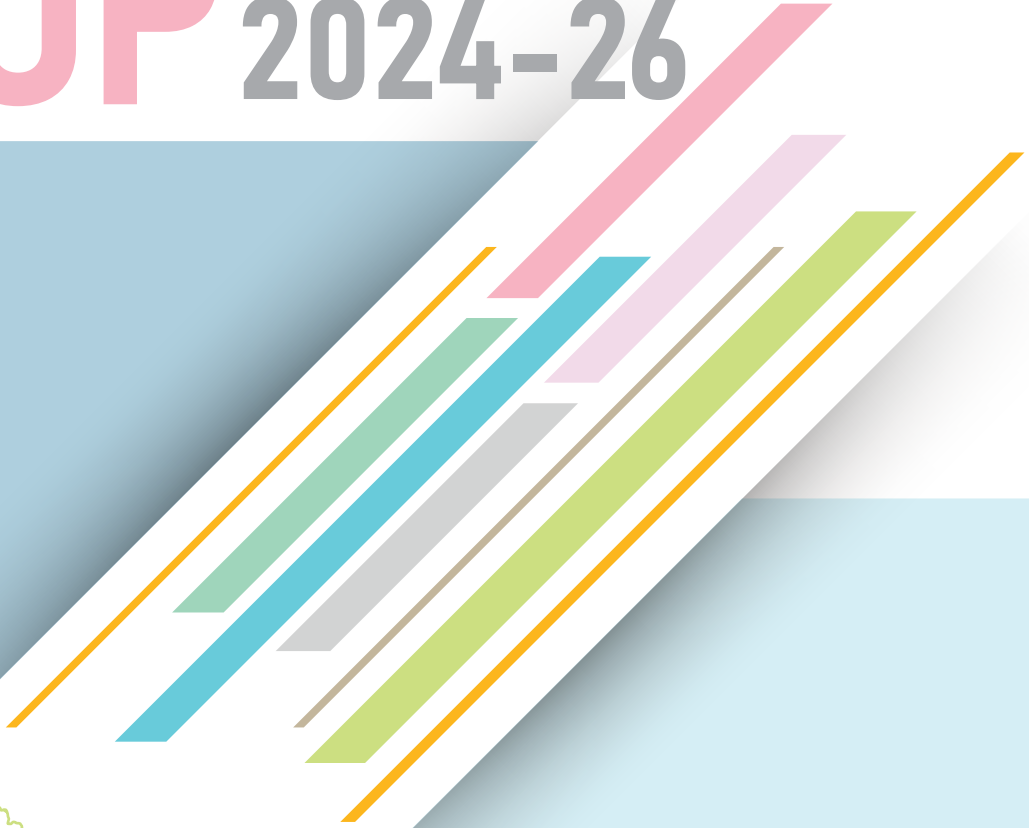


National Health Mission



District

ROP 2024-26



Nizamabad District

Commissioner of Health & Family Welfare
and Mission Director NHM, Telangana.

NATIONAL HEALTH MISSION - TELANGANA

DISTRICTS ROPS GUIDELINES

1. This year Districts ROPs will be for two years i.e. 2024-25 and 2025-26.
2. The Districts ROPs must be read in conjunction with the state ROP 2024-26.
3. The budget allocated in Districts ROPs is only **indicative** and not actual approval. Many activities will be taken up by the state headquarters for which the budget will be released to districts from state headquarters.
4. Though budget may be indicated in the District ROPs in respect of civil works, training, IEC, procurement of equipment and drugs, the budget will be met by the state headquarters.
5. Activities under Trainings, Human Resources, IEC-BCC, Procurement of Equipment, Drugs, etc. will be taken up by the state headquarters.
6. Specific guidelines for each activity will be communicated by the concerned state officers during the time of budget release to districts through proceedings. The districts have to strictly follow the guidelines.
7. Conditionalities Framework, Ayushman Arogya Mandir Scoring and Key Deliverables (state level) are also attached for reference, and for taking necessary action to achieve the district-level conditionalities.
8. ***Please refer to the state ROP 2024-26 for the remarks of each activity i.e. FMR code and Scheme / Activity head. The activity has to be taken up as per the remarks and directions given by GOI in the state ROP and as per the guidelines issued from state from time to time.***
9. For any clarification on Districts ROPs may please contact the state headquarters.

Annexure 1: Conditionalities Framework 2024 - 2026

Full Immunization Coverage (%) to be treated as the screening criteria. Conditionalities to be assessed only for those EAG, NE and hilly states which achieve at least 85% full Immunization Coverage. For rest of the States/UTs, the minimum full Immunization Coverage to be 90%.

| S. No. | Conditionalities | Indicators of 2024-26 | Source of verification | % Incentive/ Penalty |
|-----------------------------------|---|---|---|----------------------|
| 1. | AAMs State/UT Score | Based on overall score of AAMs conditionality (out of 100 marks) a. Score more than 75: +25 b. Score more than 50 or less than or equal to 75: +15 c. Score more than 25 but less than or equal to 50: -15 d. Score less than or equal to 25: -25 | AAM portal | +25 to -25 |
| 2. | Implementation of DVDMS or any other logistic management IT software with API linkages to DVDMS up to PHC level | DVDMS implementation up to AAM-SC a. In 100% AAM-SHC : +5 b. 80% or above but less than 100%: +3 c. 50% or above but less than 80%: 3 In less than 50%: -5 | DVDMS Portal or Any other similar system with API linkages to DVDMS | +5 to -5 |
| 3. | Registration of pregnant women and children (0-1) on RCH or equivalent portal | % Registration against estimated beneficiaries (Pregnant woman & Child registration 0-1 yr) on Pro-rata basis a. 100% Registration: +5 b. 80% or above but less than 100%: +3 c. 50% or above but less than 80%: No Penalty d. less than 50%: -5 | RCH Portal or similar state portal | +5 to -5 |
| Human Resources for Health | | | | |
| 4. | A. Availability of regular service delivery HRH as per IPHS norms | Percent of service delivery HRH in-place in the regular cadre against IPHS norms for the six key categories as on 31 st March 2025 and 31 st March 2026 : MPW (Male + Female), Staff Nurses, Lab Technicians, Medical Officers (MBBS) and Specialists a. At least 80%: +7.5 b. At least 70%, but less than 80%: +5 c. At least 60%, but less than 70%: | State notifications, advertisements and PIP, HRH Division of NHSRC | +7.5 to -7.5 |

| S. No. | Conditionalities | Indicators of 2024-26 | Source of verification | % Incentive/ Penalty |
|--------|--|---|--|----------------------|
| | | Nil d. Less than 60%: -7.5 | | |
| | B. In-place contractual HRH against the approved posts | Percentage of in-place contractual service delivery HRH of MPW (Male and Female), Staff Nurses, Lab technicians, Medical Officers (MBBS) and Specialists as on 31 st March 2025 and 31 st March 2026: a. More than 90%: +7.5 b. More than 70% but up to 90%: +5 c. More than 60% but up to 70%: +3 d. 60% and below: -7.5 | State notifications, advertisements and PIP, HRH Division of NHSRC | +7.5 to -7.5 |
| 5. | District wise RoP uploaded on NHM website | District wise RoP uploaded on NHM website within 30 days of issuing of RoP by MoHFW to State or by 31 st May 2022 (whichever is later) a. 100% districts whose ROPs for FY 2022-24 are uploaded on state NHM website: +5 b. Fewer than 100% districts whose ROPs for FY 2022-24 are uploaded on state NHM website: -5 | State NHM website and D.O. letter | +5 to -5 |
| 6. | Implementation of National Viral Hepatitis Control Programme (NVHCP) | | | |
| | A. Percentage put on treatment for hepatitis B against the target | a. More than 90%: incentive 3 points (+3) b. More than 60% upto 90%: incentive 1 points (+1) c. More than 30% upto 60%: penalty 1 points (-1) d. 30% or Less: penalty 3 points (-3) | Report from NVHCP Division, MoHFW | +3 to -3 |
| | B. Percentage put on treatment for hepatitis C against the target | a. More than 90%: incentive 3 points (+3) b. More than 60% to 90%: incentive 1 points (+1) c. More than 10% to 60%: penalty 1 points (-1) d. 10% or Less: penalty 3 points (-3) | Report from NVHCP Division, MoHFW | +3 to -3 |
| | C. Percentage of pregnant women screened for hepatitis B (HBsAg) against the target (Institutional Deliveries) | a. More than 90%: incentive 3 points (+2) b. More than 70% to 90%: incentive 1 points (+1) c. More than 50% to 70%: penalty 1 points (-1) | Report from NVHCP Division, MoHFW | +2 to -2 |

| S. No. | Conditionalities | Indicators of 2024-26 | Source of verification | % Incentive/ Penalty |
|--------|--|--|---|----------------------|
| | | 50% or Less: penalty 2 points(-2) | | |
| | D. Percentage of newborns administered HBIG among newborns delivered to HBAs among positive pregnant women at health care facility | a. More than 90%: incentive 3 points (+2) b. More than 70% to 90%: incentive 1 points (+1) c. More than 50% to 70%: penalty 1 points (-1) d. 50% or Less: penalty 2 points (-2) | Report from NVHCP Division, MoHFW | +2 to -2 |
| 7 | Implementation of National Mental Health Program (NMHP) | | | |
| | A. Actions taken for fulfilment of provisions under Mental Healthcare Act, 2017 (MHCA 2017) | State has established State Mental Health Authority: a. If Yes: +2 b. If not: -2 State has established Mental Health Review Boards: a. If Yes: +2 b. If not: -2 State has created State Mental Health Authority Fund: a. If yes: +1 If not: -1 | Report from Mental Health division, MoHFW | +5 to -5 |
| 8 | National Tuberculosis Elimination Programme (NTEP) | | | |
| | A. Percentage of Districts achieving 90% of TB Notification targets | a. More than 80% of districts achieving 90% of target: +5 b. 60% to 80% of districts achieving 90% of target: +2.5 c. Less than 60% of districts achieving 90% of target: -2.5 d. Less than 40% of districts achieving 90% of TB Notification target: -5 | NTEP Nikshay Portal & AAM Portal | +5 to -5 |
| | B. Percentage of Districts achieving more than 85% of treatment success rate | a. More than 80% of districts achieving 90% of target: +5 b. 60% to 80% of districts achieving 90% of target: +2.5 c. Less than 60% of districts achieving 90% of target: -2.5 d. Less than 40% of districts achieving 90% of target: -5 | NTEP Nikshay Reports | +5 to -5 |
| | C. Percentage of AAMs providing drugs to TB patients | a. More than 80% of AAMs providing drugs to TB patients: +5 b. 60% to 80% of AAMs providing drugs to TB patients: +2.5 | AAM report | +5 to -5 |

| S. No. | Conditionalities | Indicators of 2024-26 | Source of verification | % Incentive/ Penalty |
|--------|--|---|--|-------------------------|
| | | | | |
| | | c. Less than 60% of AAMs providing drugs to TB patients: -2.5 d. Less than 40% of AAMs providing drugs to TB patients: -5 | | |
| 9. | Implementation of National Quality Assurance Programme and LaQshya | | | |
| | A. NQAS certification (against the target) | a. More than 80% of the targets achieved for the FY: Incentive 10 points (+10) b. Between 51-80% of the targets achieved for the FY: Incentive 5 points (+5) c. Between 25-50% of the targets achieved for the FY: Penalty 5 points (-5) d. Less than 25% of the targets achieved for the FY: Penalty 10 points (-10) <i>* Target for percent of public health facilities certified under NQAS (as per level of the facilities) will be taken from the attached DO letter as Annexure-A</i> | Quality and Patient Safety Division, NHSRC | +10 to -10 |
| | B. LaQshya certification (Labour Room and Maternity Operation Theatre) | a. More than 80% of the targets achieved for the FY: Incentive 5 points (+5) b. Between 51-80% of the targets achieved for the FY: Incentive 3 points (+3) c. Between 25-50% of the targets achieved for the FY: Penalty 3 points (-3) d. Less than 25% of the targets achieved for the FY: Penalty 5 points (-5) | Quality & Patient Safety Division, NHSRC and | +5 to -5 |
| | | FY 2024-25 a. more than 15%: incentive: 20 points b. More than 10% up to 15%: 12 points c. More than 5% to 10%: Incentive 6 points d. Up to 5%: 3 points e. No increase: no penalty and no incentive: 0 f. Any decline: penalty 20 points | | |

| S. No. | Conditionalities | Indicators of 2024-26 | Source of verification | % Incentive/ Penalty |
|--------|---|--|--------------------------------------|----------------------|
| 10. | Compliance to IPHS for infrastructure | <p>FY 2025-26</p> <p>a. more than 30%: incentive: 20 points</p> <p>b. More than 20% up to 30%: 12 points</p> <p>c. More than 10% to 20%: Incentive 6 points</p> <p>d. Up to 10%: 3 points</p> <p>e. No increase: no penalty and no incentive: 0</p> <p>f. Any decline: penalty 20 points</p> <p>All facilities put together: SHC, PHC,CHC, SDH and DH, cumulative compliance would be taken</p> | State Reports | +20 to -20 |
| 11. | Increase in State Health Budget | <p>a. Increase in State health budget by 10% or more over previous year's budget: incentive 10 points</p> <p>b. Less than 10% increase:0</p> <p>For calculation of increase in budget, entire State budget for public health, medical education,and AYUSH would be considered</p> | State reports State Health Budget | 10 to 0 |
| 12. | National Programme for Prevention and Control of Non Communicable Diseases (NP-NCD) | | | |
| | A. % of annual screening for Hypertension of target population (30+) | <p>a.>70%: +5</p> <p>b.>60%: +4</p> <p>c. >50%: +3</p> <p>d. >40%: +2</p> <p>e. >30%: +1</p> <p>f. <30%: 0</p> <p>g. <20%: -3</p> <p>h. <10%: -5</p> | National NCD Portal | (+5 to -5) |
| | B. % of annual screening for Diabetes of target population (30+) | <p>a.>70%: +5</p> <p>b.>60%: +4</p> <p>c.>50%: +3</p> <p>d. >40%: +2</p> <p>e. >30%: +1</p> <p>f. <30%: 0</p> <p>g. <20%: -3</p> <p>h. <10%: -5</p> | National NCD Portal | (+5 to -5) |
| | C. % of people on standard of care for hypertension against the targeted population (target population: proportionate estimated population for target 75 million by 2025) | <p>a. >60%: +5</p> <p>b. >50%: +4</p> <p>c. >40%: +3</p> <p>d. >30%: +2</p> <p>e. <30%: 0</p> <p>f. <20%: -3</p> <p>g. <10%: -5</p> | National NCD Portal | (+5 to -5) |

| S. No. | Conditionalities | Indicators of 2024-26 | Source of verification | % Incentive/ Penalty |
|--------|---|--|------------------------|----------------------|
| | D. % of people on standard of care for diabetes against the targeted population (target population: proportionate estimated population for target 75 million by 2025) | a. >60%: +5 b. >50%: +4 c. >40%: +3 d. >30%: +2 e. <30%: 0 f. <20%: -3 g. <10%: -5 | National NCD Portal | (+5 to -5) |

^[1] The Conditionalities apply to both urban as well as rural areas/facilities.

^[2] Numbers given in the table are indicative of weights assigned. Actual budget given as incentive /penalty would depend on the final calculations and available budget. The total incentives to be distributed among the eligible states would be 20% of the total NHM budget.

Ayushman Arogya Mandir Scoring for NHM Conditionality FY 2024-25 and 2025-26

Method for giving Score to the State for AAMs (it has two Parts):

1. Indicator for achieving State Level AAM operationalization Targets:
 - a. State level 100% of AAMs operationalization against latest RHS – 15 marks
 - b. Creation of regular cadre of CHO - 10 marks
2. AAMs functionality - 75 marks, consists of 9 indicators – Average scoring of all the functional AAMs will be taken to arrive at the same.

| SN | Indicator | Unit | FY 2024-25 | | FY 2025-26 | | Source |
|----|--|-------|-------------------------------|-----------------------------|-----------------------------|-----------------------------|-----------------|
| | | | Max Score for SHC-AAM/U - AAM | Max Score for PHC-AAM/UPH C | Max Score for SHC-AAM/U-AAM | Max Score for PHC-AAM/UPH C | |
| 1 | AAM-01: Functional AAMs providing all 12 expanded range of services | % | 10 | 5 | 10 | 5 | AAM Portal |
| 2 | AAM-02: Functional AAMs reporting at least average footfall as per (norm of 60 footfalls per 1000 population): - Rural: SHC-AAM @ 300/month; PHC-AAM @ 1800/month - Urban: U @ 1200/month; UPHC-AAM @ 3000/month - Tribal: SHC-AAM @ 180/month; PHC-AAM @ 1200/month | AAM % | 10 | 10 | 10 | 10 | AAM portal |
| 3 | AAM-03: AAMs fulfilling expanded range of medicines and diagnostics as per Essential list of both (Medicines: SHC-AAM- 105; PHC-AAM- 171 & diagnostics: SHC- AAM-14; PHC-AAM- 63) | % | 10 | 5 | 10 | 5 | AAM Portal |
| 4 | AAM-04: AAMs providing a minimum of 10 Wellness sessions per month | % | 10 | 10 | 10 | 10 | AAM portal |
| 5 | AAM-05: Functional AAMs scoring more than 70% in Kayakalp peer assessment | % | 10* | | 10* | | Kayakal preport |

| SN | Indicator | Unit | FY 2024-25 | | FY 2025-26 | | Source |
|----|--|------|-----------------------------|-----------------------------|-----------------------------|-----------------------------|---------------------------|
| | | | Max Score for SHC-AAM/U-AAM | Max Score for PHC-AAM/UPH C | Max Score for SHC-AAM/U-AAM | Max Score for PHC-AAM/UPH C | |
| 6 | AAM-06: Utilization of National NCD App for screening and tracking of all NCD patients. | % | 5 | 10 | 5 | 10 | National NCD Portal |
| 7 | AAM-07: % of operational AAM providing active Teleconsultation services | % | 5* | | 5* | | e- Sanjeevani application |
| | | | 5* | | 5* | | |
| 8 | AAM-08: Functional AAMs with JAS constituted and conducted at least 10 meetings in a year. | % | 10 | 10 | 10 | 10 | AAM portal |
| 9 | AAM-9: AAMs whose primary healthcare teams have received timely incentives (<i>Performance Linked Payment and Team Based Incentives</i>) at least 10 times a year | % | 5 | 10 | 5 | 10 | AAM portal |

* For Kayakalp and teleconsultation any AAMs (SHC or PHC) fulfilling the criteria are scored.

Annexure 2: Key Deliverables of FY 2024-26

| Sl. No. | Indicator Type | Indicator Statement | Indicator | Unit | Target 2024-25 | Target 2025-26 | Source of data |
|---|----------------|--|--|------------|----------------|----------------|----------------|
| RCH including Routine Immunization Programme, Pulse Polio Immunization Programme | | | | | | | |
| Maternal Health | | | | | | | |
| 1 | Output | ANC Coverage | Percentage of PW registered for ANC Numerator: Total number of PW registered for ANC Denominator: Total number of estimated Pregnancies | Percentage | 100% | 100% | HMIS |
| 2 | Output | ANC registration in 1st trimester of pregnancy (within 12 weeks) | Percentage of PW registered for ANC in 1st trimester Numerator: Total number of PW registered in 1 st Trimester Denominator: Total number of PW registered for ANC | Percentage | 95% | 95% | HMIS |
| 3 | Output | Pregnant Women who received 4 or more ANC check-ups | % of PW received 4 or more ANC check-ups Numerator: Total number of PW received 4 or more ANC Denominator: Total number of PW registered for ANC | Percentage | 100% | 100% | HMIS |
| 4 | Output | Identification of HRP | % of high risk pregnancies identified Numerator: Total no. of PW identified as High Risk Pregnancy (HRP) Denominator: Total number of PW registered for ANC | Percentage | At least 15% | At least 15% | RCH Portal |
| 5 | Output | Management of HRP | % of HRP Managed Numerator: Total no. of High Risk Pregnancies (HRP) Managed | Percentage | 100% | 100% | RCH Portal |

| Sl. No. | Indicator Type | Indicator Statement | Indicator | Unit | Target 2024-25 | Target 2025-26 | Source of data |
|---------|----------------|---|--|------------|-----------------------------------|-----------------------------------|----------------|
| | | | Denominator: Total number of High Risk Pregnancies identified | | | | |
| 6 | Output | Institutional Deliveries | % of institutional deliveries out of total ANC registration Numerator: Total number of institutional deliveries (public + private) Denominator: Total number of PW registered for ANC | Percentage | 99.9% | 99.9% | HMIS |
| 7 | Output | National Certification of LRs & OTs under LaQshya | % of nationally certified LRs and OTs under LaQshya against target Numerator: Total number of nationally certified LRs & OTs. Denominator: Total number of LaQshya identified LRs and OTs | Percentage | | | NHSRC Report |
| | | | LaQshya LR | Number | 12 (Exclusive) 62 (Cumulative) | 13 (Exclusive) 75 (Cumulative) | |
| | | | LaQshya OT | Number | 17 (Exclusive) 57 (Cumulative) | 18 (Exclusive) 75 (Cumulative) | |
| 8 | Output | Public Health facilities notified under SUMAN | Percentage of public health facilities notified under SUMAN against target | Percentage | | | State Report |
| | | | Suman facilities | Number | 1686 | 1686 | |

| Sl. No. | Indicator Type | Indicator Statement | Indicator | Unit | Target 2024-25 | Target 2025-26 | Source of data |
|---------|----------------|---|---|------------|-----------------------------------|-----------------------------------|----------------|
| 9 | Output | Maternal death review mechanism | <p>% of maternal deaths reviewed against the reported maternal deaths.</p> <p>Numerator: Total no. of maternal deaths reviewed</p> <p>Denominator: Total no. of maternal deaths reported</p> | Percentage | 95% | 95% | HMIS |
| 10 | Output | JSY Beneficiaries | <p>Percentage of beneficiaries availed JSY benefits against RoP approval</p> <p>Numerator: Total no. of JSY beneficiaries paid JSY benefits</p> <p>Denominator: Total no. of beneficiaries approved in RoP</p> | Percentage | 100% of RoP targets | 100% of RoP targets | State Report |
| 11 | | NQAS certification of SUMAN notified facilities | Percentage of SUMAN notified facilities received NQAS/Part NQAS nationally certification against target | Percentage | 38% (1204/3169 cumulative target) | 45% (2234/4965 cumulative target) | NHSRC Report |

| SI No. | Indicator Type | Indicator Statement | Indicator | Unit | Target 2024-25 | Target 2025-26 | Source of data |
|-----------------------------------|----------------|---|---|------------|-------------------------------|-------------------------------|------------------------|
| Child Health (CH) and RBSK | | | | | | | |
| 12 | Output | SNCU successful discharge rate | <p>SNCU successful discharge rate out of total admission(%)</p> <p>Numerator: No. of sick and small new-borns discharged successfully (Unsuccessful denotes Death, LAMA and referral)</p> <p>Denominator: Total no. of sicknew-borns admitted in SNCUs</p> | Percentage | >85% | >85% | SNCU MIS Online Portal |
| 13 | Output | HR training in Newborn and Child Health | <p>HR training in Newborn Health</p> <p>Percentage of Paediatrician / Medical Officers and Staff Nurses trained in FBNC and NBSU Training Package.</p> <p>Numerator: Total Number of Doctors (Paediatrician/MOs) and Staff Nurses trained in FBNC and NBSU training package.</p> <p>Denominator: Total Number of Doctors (Paediatrician / MOs) and Staff Nurses posted in SNCUs/NICUs and NBSUs.</p> | Percentage | 90% | 90% | State Report |
| 14 | Output | Child Death Reporting | <p>Percentage of Child Death Reported against Estimated deaths</p> <p>Numerator: Total no. of Child deaths reported.</p> <p>Denominator: Estimated number of Child Deaths based on latest SRS report (34000)</p> | Percentage | 80% (11371 Under 5 Deaths) | 80% (11371 Under 5 Deaths) | HMIS |

| Sl. No. | Indicator Type | Indicator Statement | Indicator | Unit | Target 2024-25 | Target 2025-26 | Source of data |
|---------|----------------|--|---|------------|--|--|------------------------|
| 15 | Outcome | Stillbirth Rate | <p>Still Birth Rate</p> <p>Numerator: Total no. of Stillbirth Reported</p> <p>Denominator: Total no. of Reported Deliveries</p> | Rate | < 6 per 1000 births | < 6 per 1000 births | HMIS |
| 16 | Output | Home visits by ASHAs for New-borns | <p>Percentage of newborns received complete schedule of home visits against total reported live births.</p> <p>Numerator: Total no. of new-borns received complete scheduled of home visits</p> <p>Denominator: Total no. of new-borns</p> | Percentage | 90% (D: 374412) | 90% (D: 374412) | Quarterly HBNC Report |
| 17 | Output | Roll out of HBYC visits in all districts | <p>Percentage of District Roll out HBYC visits against RoP approval with trained ASHAs</p> <p>Numerator: Total no. of districts implementing HBYC visits with trained ASHAs</p> <p>Denominator: Total no. districts approved in RoP for HBYC implementation</p> | Percentage | 100% (33) | 100% (33) | Quarterly HBYC Report |
| 18 | Output | Paediatric HDU/ ICU unit | <p>Percentage of Districts with functional Paediatric HDU/ ICU unit out of total districts.</p> <p>Numerator: Total no. of districts with functional Paediatric HDU/ ICU unit</p> <p>Denominator: Total no. of districts with the approved Paediatric HDU/ ICU unit in RoP/ECRP.</p> | Percentage | 100 % (33 Districts) - 33 PHDUs/ PICUs | 100 % (33 Districts) - 33 PHDUs/ PICUs | Quarterly State Report |
| 19 | Output | MusQan | <p>Number of facilities national certified against total identified facilities under MusQan</p> | Percentage | 5 facilities | 2 facilities | Quarterly State Report |

| Sl. No. | Indicator Type | Indicator Statement | Indicator | Unit | Target 2024-25 | Target 2025-26 | Source of data |
|---------|----------------|---------------------------------------|--|------------|----------------------------|----------------------------|------------------------|
| | | | <p>Numerator: Total number of health facilities nationally certified under MusQan initiative (at least two units per facility (SNCU/NBSU, Paediatric OPD, Paediatric Ward, Nutrition Rehabilitation Centre)</p> <p>Denominator: Total number of facilities identified under MusQan initiative.</p> | | | | |
| 20 | Output | New-born Screening at Delivery points | <p>Percentage of New-borns Screened at the time of birth out of total Live Births</p> <p>Numerator: Number of New-borns Screened at the time of birth</p> <p>Denominator: Total number of Live Birth Reported.</p> | Percentage | 100% | 100% | Quarterly State Report |
| 21 | Output | Functional DEICs | <p>Percentage of DEIC functional with Infrastructure, Essential Equipment and HR as per Guidelines against the RoP approval.</p> <p>Numerator: Number of DEICs functional with Infrastructure, Essential Equipment, HR and training as per Guidelines.</p> <p>Denominator: Total number of DEICs approved in RoP.</p> | Percentage | 100% (26) | 100% (26) | Quarterly State Report |
| 22 | Output | RBSK MHTs | <p>Percentage of Government & Government aided schools and Anganwadi Centre covered by RBSK MHTs</p> <p>Numerator: Number of Government &</p> | Percentage | 100% AWC - 46820 (2 visit) | 100% AWC - 46820 (2 visit) | State Quarterly Report |
| | | | | | School - | School - | |

| Sl. No. | Indicator Type | Indicator Statement | Indicator | Unit | Target 2024-25 | Target 2025-26 | Source of data |
|---------|----------------|---|--|------------|--|---|------------------------|
| | | | Government aided schools and Anganwadi Centre covered by RBSK MHTs as per RBSK Guideline. Denominator: Total number of Public Schools and Anganwadi Centre in the block Source: State Quarterly Report | | 21599 | 21599 | |
| 23 | Output | Screening of Children in Government & Government aided schools and Anganwadi Centre | Percentage of children screened by RBSK MHTs Numerator: Number of Children in Government & Government aided schools and Anganwadi Centre screened by RBSK MHTs as per RBSK Guideline. Denominator: Total number of Children in Government & Government aided schools and Anganwadi Centre | Percentage | 90% 0-6 years-7056752 (2 visit) 7-18 years-2640560 | 100% 0-6 years-7840836 (2 visit) 7-18 years-2933955 | Quarterly State Report |
| 24 | Output | Secondary/ Territory management of Conditions specified under RBSK | Number of beneficiaries received Secondary/ Territory management against RoP approval (for surgical intervention specified under RBSK). | Nos. | 3388 | 3727 | Quarterly State Report |

| Sl. No. | Indicator Type | Indicator Statement | Indicator | Unit | Target 2024-25 | Target 2025-26 | Source of data |
|---------|----------------|-------------------------|---|------------|-----------------|-----------------|------------------------|
| 25 | Output | NBSU Functionality | <p>Functional (including online reporting) Newborn Stabilization Units (NBSUs) against approval at CHC/FRU level.</p> <p>Numerator: Total Number of NBSU functional and reporting online. Denominator: Total Number of NBSU approved at CHC/FRUs.</p> | Percentage | 100% (44 NBSUs) | 100% (44 NBSUs) | FBNC online reporting |
| 26 | Output | IMNCI/F-IMNCI trainings | <p>Health Professional (Paediatricians/ MOs/ SNs/ANMs/ CHOs) Trained under Child Health Training (IMNCI/ F-IMNCI) against approval.</p> <p>Numerator: Total Number of Health Professional (Paediatricians/ MOs/ SNs/ANMs/ CHOs) Trained under Child Health Training (IMNCI/ F-IMNCI). Denominator: Total Number of Health Professional (Paediatricians/ MOs/ SNs/ANMs/ CHOs) approved for IMNCI/ F-IMNCI training.</p> | Percentage | 90% | 90% | Quarterly State Report |

| Sl. No. | Indicator Type | Indicator Statement | Indicator | Unit | Target 2024-25 | Target 2025-26 | Source of data |
|---------------------|----------------|------------------------------------|---|------------|----------------|----------------|----------------------------|
| 27 | Output | ORS and Zinc Coverage | Under 5 Children received ORS and Zinc against Under 5 Children identified with Diarrhoea during the IDCF Campaign. Numerator: Total Number No.of Under 5 Children received ORS and Zinc. Denominator: Total Number of under 5 Children identified with Diarrhoea during the IDCF Campaign. | Percentage | 100% | 100% | IDCF campaign State Report |
| Immunization | | | | | | | |
| 28 | Output | Full immunization coverage | Percentage of Full Immunization Coverage (FIC) Numerator: Total number of children aged 9-11 months fully immunized with BCG+ Three doses of pentavalent + three doses of OPV + One dose of MRCV Denominator: Total No. of target children in 9-11 months' age group | Percentage | 100% | 100% | HMIS |
| 29 | Output | Coverage of birth dose Hepatitis B | Percentage of children receiving birth dose Hepatitis B as against institutional deliveries Numerator: Total no. of infants immunized with birth dose of Hepatitis B. Denominator: Total no. of institutional deliveries | Percentage | 100% | 100% | HMIS |

| Sl. No. | Indicator Type | Indicator Statement | Indicator | Unit | Target 2024-25 | Target 2025-26 | Source of data |
|---------|----------------|-----------------------|---|------------|----------------|----------------|----------------|
| 30 | Output | Dropout % of children | <p>Percentage dropout of children from Pentavalent 1 to Pentavalent 3</p> <p>Numerator: Total no. of children immunized with Pentavalent 1 – Total no. of children immunized with Pentavalent 3</p> <p>Denominator: Total no. of children immunized with Pentavalent 1</p> | Percentage | 0 | 0 | HMIS |
| 31 | Output | Dropout % of children | <p>Percentage dropout of children from Pentavalent 3 to MR 1</p> <p>Numerator: Total no. of children immunized with Pentavalent 3 – Total no. of children immunized with MCV/MR 1</p> <p>Denominator: Total no. of children immunized with Pentavalent 3</p> | Percentage | 0 | 0 | HMIS |
| 32 | Output | Dropout % of children | <p>Percentage dropout of children from MR 1 to MR 2</p> <p>Numerator: Total no. of children immunized with MR 1 – Total no. of children immunized with MR 2</p> <p>Denominator: Total no. of children immunized with MR 1</p> | Percentage | 0 | 0 | HMIS |

| Sl. No. | Indicator Type | Indicator Statement | Indicator | Unit | Target 2024-25 | Target 2025-26 | Source of data |
|------------------|----------------|-----------------------------------|--|------------|------------------|------------------|----------------|
| 33 | Output | TT10 coverage | <p>Percentage of children receiving Td10</p> <p>Numerator: Total no. of children \geq 10 years old immunized with Td10</p> <p>Denominator: Total no. of children \geq 10 years of age</p> | Percentage | 100% | 100% | HMIS |
| 34 | Output | MR-2 Coverage >95% | <p>MRCV2 coverage > 95% at state level</p> <p>Numerator: Total no. of children received MR 2</p> <p>Denominator: Total no. of children due for MR 2</p> | Percentage | >95% | >95% | HMIS |
| 35 | Output | Utilization of U-WIN | <p>No. of vaccinators using U-WIN for vaccination</p> <p>Numerator: Total no. vaccinators conducting immunization session using U- WIN</p> <p>Denominator: Total no. registered vaccinators on U-WIN</p> | Percentage | Benchmark > 90 % | Benchmark > 90 % | U-WIN |
| Nutrition | | | | | | | |
| 36 | Output | Early Initiation of Breastfeeding | <p>Percentage of newborn breastfed within one-hour birth against total live birth.</p> <p>Numerator: Number of newborn breastfed within one hour of birth.</p> <p>Denominator: Total live births registered in that period.</p> | Percentage | 100% | 100% | HMIS |

| Sl. No. | Indicator Type | Indicator Statement | Indicator | Unit | Target 2024-25 | Target 2025-26 | Source of data |
|---------|----------------|--|--|------------|----------------|----------------|----------------|
| 37 | Output | Bed Occupancy Rate at Nutrition Rehabilitation Centre (NRC) | <p>Bed Occupancy Rate at Nutrition Rehabilitation Centres (NRCs)</p> <p>Numerator- Total inpatient days of care from 1st April 2022 to 31st March 2023/1st April 2023 to 31st March 2024</p> <p>Denominator- Total available bed days during the same reporting period</p> | Percentage | 95% | 95% | State reports |
| 38 | | Successful Discharge Rate at Nutrition Rehabilitation Centre (NRC) | <p>Successful Discharge Rate at Nutrition Rehabilitation Centres (NRCs)</p> <p>Numerator- Total number of under-five children discharged with satisfactory weight gain for 3 consecutive days (>5gm/kg/day) from 1st April 2022 to 31st March 2023/1st April 2023 to 31st March 2024</p> <p>Denominator- Total No. of under-five children exited from the NRC during the same reporting period</p> | Percentage | 95% | 95% | State reports |
| 39 | Output | IFA coverage | Percentage of pregnant women given 180 IFA tablets as against pregnant women registered for ANC | Percentage | 100% | 100% | HMIS report |

| Sl. No. | Indicator Type | Indicator Statement | Indicator | Unit | Target 2024-25 | Target 2025-26 | Source of data |
|---------|---|----------------------|---|------|----------------|----------------|----------------|
| | | Anaemia Mukta Bharat | Numerator: Number of pregnant women given IFA tablets. Denominator: Number of pregnant women registered for ANC in that period. | | | | |
| 40 | Percentage of children 6-59 months given 8-10 doses of IFAsyrup every month Numerator: Total number of children 6-59 months given 8-10doses of IFA syrup in the reporting month Denominator: Number of children 6-59 months covered under the programme (Target Beneficiaries) | | Percentage | 95% | 95% | HMIS report | |
| 41 | Percentage of children 5-9years given 4-5 IFA tablets every month Numerator: Total number of children 5-9 years given 4-5 IFA tablets in the reporting month Denominator: Number of children 5-9 years covered under the programme (Target Beneficiaries) | | Percentage | 95% | 95% | HMIS report | |

| Sl. No. | Indicator Type | Indicator Statement | Indicator | Unit | Target 2024-25 | Target 2025-26 | Source of data |
|--|----------------|---------------------|--|------------|--|--|-------------------------------|
| Comprehensive Abortion Care (CAC) | | | | | | | |
| 42 | Output | CAC services | <p>Public Health Facilities equipped with Drugs (MMA Combi pack/ Mifepristone & Misoprostol), Equipment (MVA/EVA) and Trained Provider (MTP Trained MO/OBGYN) for providing CAC services against the total number of Public Health Facilities as per RoP targets</p> <p>Numerator: Total no. of Public Health Facilities that are equipped with Drugs (MMA Combi pack/ Mifepristone & Misoprostol), Equipment (MVA/EVA) and Trained Provider (MTP Trained MO/OBGYN))</p> <p>Denominator: Total number of Public Health Facilities as per RoP targets</p> | Percentage | <p>1. 100% of CHCs and above level of public Health facilities to be equipped</p> <p>2. 497 facilities (Medical Colleges: 20; District Hospitals including Women and Children Hospitals/ MCH Wings: 35; Sub Divisional Hospitals: 38; CHCs (FRUs) & Other Sub District Level Hospitals: 79; 24 x 7 PHCs, Non FRU CHCs: 325; Other PHCs: 0)</p> | <p>1. 100% of CHCs and above level of public Health facilities to be equipped</p> <p>2. 667 facilities (Medical Colleges: 20; District Hospitals including Women and Children Hospitals/ MCH Wings: 35; Sub Divisional Hospitals: 38; CHCs (FRUs) & Other Sub District Level Hospitals: 79; 24 x 7 PHCs, Non FRU CHCs: 325; Other PHCs: 170)</p> | CAC Annual & Quarterly Report |
| 43 | Output | MO training | <p>Medical Officers trained in CAC against the RoP approval</p> <p>Numerator: Total no. of Medical Officers (MBBS) trained</p> <p>Denominator: Target of Medical Officers (MBBS) to be trained as per RoP</p> | Number | 170 MBBS Doctors | 180 MBBS Doctors | CAC Annual & Quarterly Report |

| Sl. No. | Indicator Type | Indicator Statement | Indicator | Unit | Target 2024-25 | Target 2025-26 | Source of data |
|-----------------------------|----------------|----------------------------------|---|------------|----------------|----------------|-------------------|
| Family Planning (FP) | | | | | | | |
| 44 | Output | PPIUCD acceptance | <p>Percentage of PPIUCD acceptance among Institutional deliveries</p> <p>Numerator: Number of PPIUCDs inserted in public facilities</p> <p>Denominator: Number of institutional deliveries in public facilities</p> | Percentage | 10% | 13% | HMIS |
| 45 | Output | Injectable MPA users | <p>Percentage of Injectable MPA users among Eligible Couples</p> <p>Numerator: Total number of Injectable MPA doses/4</p> <p>Denominator: Number of Eligible Couples</p> | Percentage | 0.3 | 0.4 | HMIS/RCH register |
| 46 | Output | Operationalization of FPLMIS | <p>% of Facilities indenting and issuing the stock in FPLMIS out of total facilities (including Sub Centres)</p> <p>Numerator: Number of Facilities indenting and issuing the stock in FPLMIS (including Sub Centres)</p> <p>Denominator: Total Number of Facilities registered in FPLMIS (including Sub Centres)</p> <p>Remark: This key deliverable <i>has been revised to include Sub Centres</i></p> | Percentage | 75% | 95% | FPLMIS |
| 47 | | % Increase in Male Sterilization | <p>Numerator: No. of male sterilizations in current year (-)</p> | Percentage | 10% | 20% | HMIS |

| Sl. No. | Indicator Type | Indicator Statement | Indicator | Unit | Target 2024-25 | Target 2025-26 | Source of data |
|--|----------------|--|---|--------|----------------|----------------|-------------------------------|
| | | Performance from 2022-23 | Denominator: No. of male sterilizations in 2022-23 Remark: The baseline year for this Key deliverable has been revised from 2019-20 to 2022-23 | | | | |
| | | | Existing additional Key ROP deliverables for selected States/UT's | | | | |
| 48 | | Doubling Family Planning Indemnity Scheme Compensation (SC Directives) | Doubling of Compensation under FPIS as per the Honourable Supreme Court Directives. Source: Annual FPIS report Remark: This deliverable is applicable for only for few states which have not yet completed the doubling of compensation | Yes/No | Yes | Yes | Annual FPIS Report |
| 49 | | Number of Nayi Pahel Kits (NPK) distributed per ASHA | Numerator: No. of NPKs distributed Denominator: No. of ASHAs Source: MPV Quarterly Report Remark: This deliverable is applicable only to 13 MPV States and few other states. | Number | NA | NA | MPV Quarterly Report |
| 50 | | Number of Sass Bahu Sammela Conducted | No. of SBS Conducted Source: MPV Quarterly Report Remark: This deliverable is applicable only to 13 MPV States and few other states. | Number | NA | NA | MPV Quarterly Report |
| Adolescent Health/ Rashtriya Kishor Swasthya Karyakram (RKSK) | | | | | | | |
| 51 | Output | Client load at AFHC | Average monthly Client load at AFHC/month in PE Districts at DH/SDH /CHC level to increase | Nos. | 150 | 165 | (HMIS/ Quarterly AFHC Report) |

| Sl. No. | Indicator Type | Indicator Statement | Indicator | Unit | Target 2024-25 | Target 2025-26 | Source of data |
|---------|----------------|---------------------|--|------------|----------------|----------------|----------------|
| | | | <p>by 25% in 2024-25 and 50% in 2025-26 from the baseline data of 2023-24</p> <p>Numerator: Total Clients registered at AFHC. Denominator: Number of AFHCs divided by no. of months (per AFHC per month)</p> | | | | |
| 52 | Output | WIFS coverage | <p>Percentage coverage of in-school beneficiaries under WIFS Programme every month.</p> <p>Numerator- Total no in School beneficiaries covered Denominator- Targeted beneficiaries (In School)</p> | Percentage | 100% | 100% | HMIS |
| 53 | Output | WIFS coverage | <p>Percentage coverage of out-of-school (girls) under WIFS Programme every month.</p> <p>Numerator- Total no out of School beneficiaries covered Denominator- Targeted beneficiaries (out of School)</p> | Percentage | 95% | 95% | HMIS |

| Sl. No. | Indicator Type | Indicator Statement | Indicator | Unit | Target 2024-25 | Target 2025-26 | Source of data |
|---------|----------------|---|---|------------|----------------|----------------|------------------|
| 54 | Output | Selection of Peer Educator | <p>Percentage of Peer Educator selected against the target</p> <p>Numerator- Total no PEs selected</p> <p>Denominator- Total No. of PEs to be selected</p> | Percentage | 100% | 100% | State PE Reports |
| 55 | | Training of Peer Educator | <p>Percentage of Peer Educator trained against the Peer Educator selected.</p> <p>Numerator- Total no PEs Trained</p> <p>Denominator- Total No. of PEs selected</p> | Percentage | 100% | 100% | State PE Reports |
| 56 | Output | Menstrual Hygiene Scheme coverage | <p>Percentage coverage of Adolescent Girls against the target under Menstrual Hygiene Scheme</p> <p>Numerator- Total no. of adolescent girls receiving sanitary napkins under MHS</p> <p>Denominator- Total No. of adolescent girls to be covered</p> | Percentage | 100% | 100% | HMIS |
| 57 | Output | Ayushman Bharat School Health & Wellness Programme implementation | <p>Percentage of the selected Districts implementing Ayushman Bharat School Health & Wellness Programme against the RoP approval</p> <p>Numerator- Total no. of districts implementing ABSHWP</p> <p>Denominator- Total No. of Districts selected for ABSHWP</p> | Percentage | 100% | 100% | SHWP Report |

| Sl. No. | Indicator Type | Indicator Statement | Indicator | Unit | Target 2024-25 | Target 2025-26 | Source of data |
|--|----------------|---|---|------------|----------------|----------------|----------------|
| 58 | Output | Ayushman Bharat School Health & Wellness Programme implementation | <p>Percentage of Health & Wellness Ambassadors trained to transact weekly activities in schools in the selected districts</p> <p>Numerator- Total no. of Health & Wellness Ambassadors (HWAs) trained</p> <p>Denominator- Total no of HWAs to be trained</p> | Percentage | 100% | 100% | SHWP Report |
| Pre-Conception & Pre-Natal Diagnostic Techniques (PCPNDT) | | | | | | | |
| 59 | Output | Total Number of meetings conducted by district advisory committees (DAC) in the state/ UT | <p>As mandated by the PC&PNDT Act law the DAC has to meet minimum 6 times a year</p> <p>Numerator- Total No. of meetings actually conducted by all districts in the state</p> <p>Denominator- No of district *6</p> | Percentage | 100% | 100% | State Report |
| National Iodine Deficiency Disorders Control Programme (NIDDCP) | | | | | | | |
| 60 | Output | Monitoring of salt & urine in the State/UT | <p>Percentage of salt samples tested using Salt Testing Kits (Qualitative testing) by ASHA in identified District.</p> <p>Numerator: Total Number of sample tested by ASHA.</p> <p>Denominator: Number of ASHA *50 samples*12 months.</p> | Percentage | 85% | 100% | State Report |

| Sl. No. | Indicator Type | Indicator Statement | Indicator | Unit | Target 2024-25 | Target 2025-26 | Source of data |
|---|----------------|--|--|------------|----------------|----------------|----------------|
| 61 | | | <p>Percentage of salt samples tested (Quantitative) in Lab (Volumetric method) for estimation of iodine content.</p> <p>Numerator: Number of salt samples tested (Quantitative)in Lab (Volumetric method).</p> <p>Denominator: Number ofDistrict *25 samples*12 months.</p> | Percentage | 100% | 100% | State Report |
| 62 | | | <p>Percentage of urine samples tested for Urinary iodine estimation.</p> <p>Numerator: Number of urine samples tested for Urinary iodine estimation.</p> <p>Denominator: Number of District *25 samples*12 months.</p> | Percentage | 90% | 100% | State Report |
| Reproductive and Child Health (RCH) Portal | | | | | | | |
| 63 | Output | Implementation of RCH application - Registration Coverage of Pregnant Women and Child (0-1 Year) | <p>Percentage of Registration Coverage of Pregnant Women and Child on pro- rata basis</p> <p>Numerator: Total No. of Registered PW and Child onRCH Portal</p> <p>Denominator: Estimated PWand Child on pro-rata basis.</p> | Percentage | 100% | 100% | RCH Portal |
| 64 | Output | Implementation of RCH application - Service Delivery Coverage of PW | <p>Percentage of Service Delivery Coverage of entitled Pregnant Women for ANC services.</p> <p>Numerator: Total No. of PW received All ANC services (ANC1 + ANC2 + ANC3 + ANC4</p> | Percentage | 100% | 100% | RCH Portal |

| Sl. No. | Indicator Type | Indicator Statement | Indicator | Unit | Target 2024-25 | Target 2025-26 | Source of data |
|---|----------------|---|--|------------|----------------|----------------|----------------|
| | | | + TT1 / TT2 + 180 IFA tablet) Denominator: Total PW expected for Service based on reporting period | | | | |
| 65 | Output | Implementation of RCH application- Service Delivery Coverage of Child | Percentage of Service Delivery Coverage of entitled Child [0-1Year] for Immunization services. Numerator: Total No. of Child received All Immunization services (as per National Immunization Schedule) Denominator: Total child expected for Service based on reporting period | Percentage | >80% | >80% | RCH Portal |
| 66 | Output | Implementation of RCH application - Total Deliveries Reported | Percentage of total Delivery reported of Pregnant Women. Numerator: Total No. of Delivery reported Denominator: Total PW expected for Delivery based on reporting period | Percentage | 99.90% | 99.90% | RCH Portal |
| 67 | Output | Implementation of ANMOL application | Health provider(ANM) using ANMOL application for entering Data Numerator: Total No. of Users(ANM) doing data entry. Denominator: Total no. active users (ANMs) registered in RCH Portal. | Percentage | 100.00% | 100.00% | RCH Portal |
| National Disease Control Programme | | | | | | | |
| Integrated Disease Surveillance Programme (IDSP) | | | | | | | |

| Sl. No. | Indicator Type | Indicator Statement | Indicator | Unit | Target 2024-25 | Target 2025-26 | Source of data |
|---|----------------|---|---|------------|--|--|----------------|
| 68 | Output | Weekly Reporting – S form | % of Reporting Units Reported in S form | Percentage | 80% | 95% | IDSP IHIP |
| 69 | Output | Weekly Reporting – P form | % of Reporting Units Reported in P form | Percentage | 80% | 95% | IDSP IHIP |
| 70 | Output | Weekly Reporting – L form | % of Reporting Units Reported in L form | Percentage | 80% | 95% | IDSP IHIP |
| 71 | Output | Weekly Reporting – Lab Access of Outbreaks | Lab Access of Outbreaks reported under IDSP excluding Chickenpox, Food Poisoning, Mushroom Poisoning | Percentage | 82% | 84% | IDSP IHIP |
| National Tuberculosis Elimination Programme (NTEP) | | | | | | | |
| 72 | Output | Presumptive TB Examination | Presumptive TB examination / lakh population | Nos. | 2000 | 2500 | |
| 73 | Output | Expansion of rapid molecular diagnostics for TB | % of TB patients tested for Rifampicin resistance | Nos. | 70% | 70% | State Report |
| 74 | Output | State TB Score | % Improvement in Annual TB Score Numerator: (State Annual TB Score in Current Yr- State Annual TB Score in last yr) Denominator: State Annual TB Score in last yr | Percentage | 84 | 87 | NIKSHAY Portal |
| 75 | Output | Nikshay Poshan Yojana | % of eligible patients receiving all benefit of DBT Numerator: No. of eligible patients receiving all benefit of DBT Denominator: No. of eligible patients | Percentage | 100% | 100% | NIKSHAY Portal |
| 76 | Output | Districts with TB free Status | No. of districts to achieve TB free Status # Bronze, # Silver, # Gold, #TB Free district/City | Nos. | State- Bronze, Gold-2, Silver-2, Bronze-0, TB Free-0 | State- Bronze, Gold-2, Silver-3, Bronze-0, TB Free-1 | State Report |
| 77 | Output | % Of Gram Panchayat/wards with TB free Status | % Of Gram Panchayat/ward to achieve TB free Status # Bronze, # Silver, # Gold, #TB Free | Percentage | 15% | 20% | |

| Sl. No. | Indicator Type | Indicator Statement | Indicator | Unit | Target 2024-25 | Target 2025-26 | Source of data |
|---|----------------|---|---|------------|----------------|----------------|---|
| 78 | Output | % of patients adopted by Ni-Kshay Mitra | % Of consented TB patients adopted by Ni-Kshay Mitra | Percentage | 100% | 100% | |
| National Rabies Control Program (NRCP) | | | | | | | |
| 79 | Output | Availability of Rabies Vaccine and Rabies Immunoglobulins | ARV available at the Health Facilities as per Essential Medical List Numerator- Total No. of Health Facility till PHC level having stocks of ARV Source- DVDMS Portal/State Monthly report Denominator- Total No. of Health Facilities till PHC level (Source- Rural Health Statistic-MoHFW) | Percentage | 85% | 90% | DVDMS Portal/State Monthly report Rural Health Statistic-MoHFW) |
| 80 | Output | | Rabies Immunoglobulins available at the Health Facilities as per Essential Medical List Numerator- Total No. of Health Facility till CHC level having stocks of ARS Denominator- Total No. of Health Facilities till CHC level (Source- Rural Health Statistic-MoHFW) | Percentage | 75% | 80% | DVDMS Portal/State Monthly report Rural Health Statistic-MoHFW) |
| National Viral Hepatitis Control Programme (NVHCP) | | | | | | | |
| 81 | Output | Management of Hepatitis C -under the program | Percentage of Hepatitis C Patients benefited i.e number who received treatment against target. | Percentage | 1017 | 1017 | NVHCP MIS Portal |
| 82 | Output | Management of Hepatitis B -under the program | Percentage of Hepatitis B Patients benefited i.e number who received treatment against target | Percentage | 498 | 580 | NVHCP MIS Portal |
| 83 | Output | Pregnant women screened for Hepatitis B | Percentage of pregnant women screened for hepatitis B (HBsAg) against the target (Institutional Deliveries) | Percentage | 689274 | 689274 | RCH Portal |

| Sl. No. | Indicator Type | Indicator Statement | Indicator | Unit | Target 2024-25 | Target 2025-26 | Source of data |
|--|----------------|---|--|------------|----------------|----------------|----------------|
| 84 | Output | Administration of HBIG to newborns of HBsAg positive pregnant women | Percentage of new borns administered HBIG among new borns delivered to HBsAg positive pregnant women at health care facility | Percentage | 965 | 965 | RCH Portal |
| National Leprosy Elimination Programme (NLEP) | | | | | | | |
| 85 | Output | Percentage of Grade II Disability(G2D) among new cases | No. of Districts with Grade II Disability (G2D) percentage less than 2% among new cases | Nos | 33 | 33 | State Report |
| 86 | Output | Certification of Districts as Leprosy Free | No. of Districts certified as Leprosy Free | Number | 0 | 0 | State Report |
| 87 | Output | Clearance of backlog of Reconstructive Surgeries (RCS) | Number of Reconstructive Surgeries (RCS) conducted during the F.Y./ Number of Patients Eligible for RCS during the F.Y.*100 | Number | 100 | 100 | State Report |
| 88 | | No. of districts with zero incidence of leprosy case in F.Y. | No. of districts with zero new cases of leprosy in the current F.Y. | Number | 3 | 5 | State Report |

| Sl. No. | Indicator Type | Indicator Statement | Indicator | Unit | Target 2024-25 | Target 2025-26 | Source of data | |
|---|----------------|--|--|------------|----------------|----------------|---|--------------------|
| National Vector Borne Disease Control Programme (NVBDCP) | | | | | | | | |
| 89 | Output | Malaria Reduction in API at District level | No. of districts with API <1 | Number | 33 | 33 | MES report, NVBDCP | |
| 90 | | | Annual blood Examination Rate (ABER) | Percentage | 10 | 10 | MES report, NVBDCP | |
| 91 | | | %IRS population coverage in each round | I Round | | 95 | 95 | IRS report, NVBDCP |
| 92 | | | | II Round | | 95 | 95 | IRS report, NVBDCP |
| 93 | | | No. of Districts Certified as Malaria Free | Number | 20 | 25 | State & District, NVBDCP DataBase | |
| 94 | Output | Lymphatic Filariasis | The proportion of districts/IUs with coverage >65% for DA | Percentage | 3 | 0 | 13 Table MDA report and WHO Post MDA report | |
| 95 | Output | | and 85% for IDA of the total population (admin coverage/independent assessment) | | 4 | 0 | 13 Table MDA report and WHO Post MDA report | |
| 96 | Output | | Morbidity management and disease prevention (MMDP) services for Hydrocele and Lymphedema cases | Number | 66658 588 | 66658 569 | 13 Table MDA report/Monthly MMDP report | |
| 97 | Output | | Cumulative number of endemic districts which achieved mf rate <1% verified by TAS 1 | Number | 21 | 28 | As per TAS plan | |
| 98 | Output | | Cumulative number of districts to achieve Disease Free Status-LF as per TAS 3 Clearance | Number | 14 | 14 | Post TAS report | |
| 99 | Output | Dengue & Chikungunya | Dengue Case Fatality Rate at State level | Percentage | <1% | <0.5% | State Report | |
| 100 | Output | Kala-azar | Number of blocks achieved Kala azar elimination i.e. <1 case per 10000 population at block level | Number | NA | NA | | |

| Sl. No. | Indicator Type | Indicator Statement | Indicator | Unit | Target 2024-25 | Target 2025-26 | Source of data |
|--|----------------|---|---|-----------------------|----------------|----------------|-------------------|
| 101 | | | Number of blocks sustained Kala-azar elimination | Number | NA | NA | |
| 102 | | | %IRS population coverage in each round | Percentage | NA | NA | |
| 103 | | | %Complete treatment of KA Cases and HIV/VL | Percentage | NA | NA | |
| 104 | | | %Complete treatment of PKDL Cases | Percentage | NA | NA | |
| Non-Communicable Diseases | | | | | | | |
| National Tobacco Control Programme (NTCP) | | | | | | | |
| 105 | Output | Increase in availability of Tobacco Cessation Services available | No. of districts with Tobacco Cessation Centers | Number | 33 | 33 | MIS / NTCP portal |
| 106 | Outcome | Improved access for Tobacco Cessation Services | No. of People availed tobacco cessation services in 2022-24 | Number | 13500 | 18000 | MIS / NTCP portal |
| National Mental Health Programme (NMHP) | | | | | | | |
| 107 | Output | Improved coverage of mental health services | Percentage of districts covered District Mental Health Units operationalized. | Percentage | 100% | 100% | State Report |
| 108 | Output | Improved coverage of mental health services | Percentage increase in number of persons catered through District Mental Health Units | Number/ Percentage | 44000 | 49000 | State Report |
| National Programme for Health Care of Elderly (NPHCE) | | | | | | | |
| 109 | Output | Provision of primary and secondary Geriatric healthcare services at District Hospital and below | Numerator: No. of DH with Geriatric Unit (at least 10 beds) Denominator : No. of total DH in the state | Number | 33 | 33 | NPHCE QPR |
| 110 | Output | Provision of primary and secondary Geriatric healthcare services at District Hospital and below | Numerator: No. of DH with physiotherapy unit for elderly Denominator : No. of total DH in the state | Number | 33 | 33 | NPHCE QPR |
| 111 | Output | Provision of primary and secondary Geriatric healthcare services at | Numerator: No. of CHCs with physiotherapy unit Denominator : No of total CHCs in the state | Number | 0 | 0 | NPHCE report |

| Sl. No. | Indicator Type | Indicator Statement | Indicator | Unit | Target 2024-25 | Target 2025-26 | Source of data |
|--|----------------|--|--|------------|----------------|----------------|---------------------|
| | | District Hospital and below. | | | | | |
| National Programme for Non-Communicable Diseases (NP-NCD) | | | | | | | |
| 112 | Input | population (30+) registered for NCD Services | % of population (30+) registered in the National NCD portal | Percentage | 1,41,60,640 | 1,42,27,980 | National NCD Portal |
| 113 | Process | population screened for NCD | % of population screened for Hypertension | Percentage | 1,41,60,640 | 1,42,27,980 | National NCD Portal |
| 114 | Process | population screened for NCD | % of population screened for Diabetes | Percentage | 1,41,60,640 | 1,42,27,980 | National NCD Portal |
| 115 | Output | Patient put on treatment | % of people on standard of care for Hypertension against target population | Percentage | 16,14,615 | 17,76,076 | National NCD Portal |
| 116 | Output | Patient put on treatment | % of people on standard of care for Diabetes against target population | Percentage | 9,21,033 | 10,13,136 | National NCD Portal |
| National Programme for Control of Blindness and Visual Impairment (NPCB&VI) | | | | | | | |
| 117 | Output | Eye care services under NPCB and VI provided at District level and below District level | Percentage achievement of Cataract operations against targets | Percentage | | | District Reports |
| | | | | Number | 573800 | 260000 | |
| 118 | Output | Eye care services under NPCB and VI provided at primary, secondary at District level and below level | Percentage achievement of Collection of donated eyes for corneal Transplantation against targets | Percentage | | | District Reports |
| | | | | Number | 7560 | 7930 | |
| 119 | Output | Eye care services under NPCB and VI provided at District level and below District level | No. of Free Spectacles to school children suffering from Refractive errors | Number | 55125 | 57880 | District Reports |
| 120 | Outcome | Cataract backlog Free Certification | No. of Districts Certified as Cataract backlog Free | Number | 5 | 5 | State Report |
| Pradhan Mantri National Dialysis Program (PMNDP) | | | | | | | |
| 121 | Output | Dialysis Facility in the District | No. of districts with dialysis facility under PMNDP Calculated as total number of districts having dialysis centres divided by the total number of districts in the state. | Number | 33 | 33 | State Report |
| 122 | Output | Number of sessions held in the month | Estimated number of dialysis sessions (monthly) Calculated as 10% increase over the previous year dialysis sessions | Number | 3.6 | 3.75 | State Report |

| Sl. No. | Indicator Type | Indicator Statement | Indicator | Unit | Target 2024-25 | Target 2025-26 | Source of data |
|--|----------------|---|---|------------|----------------|----------------|--|
| 123 | Output | Peritoneal dialysis services under PMNDP | Estimated number of patients planned for peritoneal dialysis services | Number | 0 | 0 | |
| National Programme for Prevention and Control of Fluorosis (NPPCF) | | | | | | | |
| 124 | Outcome | Improvement in sample testing in fluoride affected districts | Percentage of water samples tested for Fluoride level against number of samples as per norms. | Percentage | NA | NA | NPPCD QPR |
| 125 | Outcome | Medical management of diagnosed fluorosis cases including supplementation, surgery, and rehabilitation. | Percentage of patients provided medical management to diagnosed fluorosis cases out of the total diagnosed cases. | Percentage | 100% | 100% | NPPCD QPR |
| National Programme for Prevention & Control of Deafness (NPPCD) | | | | | | | |
| 126 | Output | Hearing Aid | Number of people with hearing problems rehabilitated. | Number | 2400 | 3000 | NPPCD QPR |
| 127 | Output | Audiometry Facilities | Number of people screened for deafness/hearing impairment. | Number | 9000 | 12000 | NPPCD QPR |
| National Programme for Palliative Care (NPPC) | | | | | | | |
| 128 | Output | Palliative care services under NPPC programme | Total no. of District Hospitals providing palliative care services | Number | 34 | 34 | MPR |
| National Oral Health Programme (NOHP) | | | | | | | |
| 129 | Output | Strengthening Oral Health Services | Percentage of PHFs providing dental care services upto CHC level against total PHFs upto CHC level (DH/SDH/CHC) | Number | 100% | 100% | HMIS (Dental OPD)/MPR |
| National Programme for Climate Change and Human Health (NPCCHH) | | | | | | | |
| 130 | Output | Orientation/ Training/Capacity Building of healthcare staff | % of Medical officers in district trained on diagnosis and management of HRI and ARI surveillance in context of air pollution | Percentage | 40% | 80% | Quarterly programme performance report- NPCCHH |
| 131 | Output | Heat Related Illness | % of DHs and SDH with operational min 5 bedded Heat Stroke Room (from 1st March – 31st July) | Percentage | 20% | 40% | Quarterly programme performance report- NPCCHH |
| 132 | Output | Acute Respiratory Illness (ARI) in context of Air Pollution | % of Sentinel Surveillance Hospitals reporting daily ARI cases on IHIP portal | Percentage | 80% | 100% | IHIP- NPCCHH |

| Sl. No. | Indicator Type | Indicator Statement | Indicator | Unit | Target 2024-25 | Target 2025-26 | Source of data |
|---|----------------|---|--|------------|------------------------------|--------------------------------|------------------------------------|
| Health System Strengthening (HSS)- Rural and Urban | | | | | | | |
| 133 | Output | Improving access to healthcare in urban India | Number of operational urban health facilities (UPHCs and UCHCs) increased. (a) UCHC% = Numerator: No. Of UCHC operationalized Denominator: No. of UCHC approved (b) UPHC % = Numerator: No. of UPHC operationalized Denominator: No. of UPHC approved | Percentage | a)NA b)94% 260/275 | a) NA b)100% 275/275 | MIS-QPR/ Approved StateRoPs |
| 134 | Output | Improving access to healthcare in urban India | No. of UPHCs converted to Ayushman Arogya Mandir Numerator: No. of UPHC converted to AAMs Denominator: Total No. of UPHCs approved | Percentage | 94% 260/275 | 100% 275/275 | AAM Portal/ Approved State RoPs |
| 135 | Output | Improving access to healthcare in urban India | % of UCHC and UPHC-AAPs offering specialist service Numerator: No. of UCHC and UPHC-AAMs offering specialist services Denominator: No. of UCHC and UPHC-AAMs approved | Percentage | 96% 265/275 | 100% 275/275 | AAM Portal/ Approved State RoPs |
| 136 | Output | Improving access to healthcare in urban India | Annual utilization of urban health facilities (UPHC-AAMs) increased with at least 50% visits made by women to be sustained a)Urban Health Facilities Footfall: Numerator: No of UPHC-AAMs reporting at least average footfall (60 footfalls per 1000 population) Denominator: No of operational UPHC-AAMs b) % female footfall: | Percentage | a) 98% b) 59% | a) 98% b) 60% | AAM Portal |

| Sl. No. | Indicator Type | Indicator Statement | Indicator | Unit | Target 2024-25 | Target 2025-26 | Source of data |
|---------|----------------|---|--|------------|--|--|----------------|
| | | | Numerator: Female footfall in current year Denominator: Total footfall recorded in current year | | | | |
| 137 A | Output | Improving access to healthcare in urban India | % No. of Individuals screened for NCD at UPHC-AAM a) For Hypertension Numerator: Individuals screened for NCD-Hypertension Denominator: Total 30 years and above, Urban population as on 1 st April (Beginning of FY) (b) For Diabetes: Numerator: No. of individual screened for Diabetes Denominator: Total 30 years and above urban population as on 1st April (Beginning of FY) | Percentage | a) 2% Total 30 years and above urban population b) 2% Total 30 years and above urban population | a) 2% Total 30 years and above urban population b) 2% Total 30 years and above urban population | AAM Portal |
| 137 B | | | % of individual screened for NCD at UPHC-AAM (a) For Oral Cancer: Numerator: No. of individual screened for Oral Cancer Denominator: Total 30 years and above urban population as on 1st April (Beginning of FY) (b) For Breast Cancer: Numerator: No. of individual screened for Breast Cancer Denominator: Total 30 years and above urban women population as on 1st April (Beginning of FY) (C)For Cervical Cancer: Numerator: No. of individual screened for Cervical Cancer | Percentage | a) 1% Total 30 years and above urban population b) 1% Total 30 years and above urban population c) 1% Total 30 years and above urban population | a) 1% Total 30 years and above urban population b) 1% Total 30 years and above urban population c) 1% Total 30 years and above urban population | AAM Portal |

| Sl. No. | Indicator Type | Indicator Statement | Indicator | Unit | Target 2024-25 | Target 2025-26 | Source of data |
|---------|----------------|--|--|------------|----------------|----------------|--------------------------------------|
| | | | Denominator: Total 30 years and above urban women population as on 1st April (Beginning of FY) | | | | |
| 138 | Output | Providing quality healthcare | %Urban pregnant women accessing 4 or more antenatal care at UPHC-AAM and UCHC Numerator: Total urban PW accessing 4 or more ANC's Denominator: Total urban PW registered | Percentage | 100% | 100% | HMIS |
| 139 | Output | Providing quality healthcare services inUrbanIndia | Percentage of Urban Health and Nutrition Day (UHND)held organized Numerator: Number of monthly UHND organized Denominator: Number of monthly UHND approved | Percentage | 100% | 100% | MIS/HMIS portal/ Approved State RoPs |
| 140 | Output | Providing quality healthcare services inUrbanIndia | Number of patients treated for Diabetes and Hypertension at UPHC-AAM (a) % of diagnosed patients put on treatment for Diabetes: Numerator: Number of patients put on treatment for Diabetes Denominator: Number of patients diagnosed for Diabetes (b) % of diagnosed patients put on treatment for Hypertension: Numerator: Number of patients put on treatment for Hypertension Denominator: Number of patients diagnosed for Hypertension | Number | a) 5% b) 5% | a) 5% b) 5% | AAM Portal |

| Sl. No. | Indicator Type | Indicator Statement | Indicator | Unit | Target 2024-25 | Target 2025-26 | Source of data |
|---|----------------|--|---|------------|---|---|----------------------------------|
| DVDMS | | | | | | | |
| 141 | Output | Implementation of DVDMS in AAM SHC | % of Health Facilities up to AAM SHC implementing the DVDMS | Percentage | 98% | 100% | State Report |
| Quality Assurance (QA) | | | | | | | |
| 142 | Output | NQAS certified public health facilities (National + State) | Cumulative Number of NQAS certified public health facilities | Number | (a) DH: 15(70%) (b) SDH: 14(50%) (c) CHC: 62(50%) (d) PHC: 318 (50%) (e) UPHC: 121 (50%) (f) AAM SC: 847 (40%) | (a) DH: 17 (75%) (b) SDH: 17 (60%) (c) CHC: 75 (60%) (d) PHC: 382 (60%) (e) UPHC: 145 (60%) (f) AAM SC: 1270 (60%) | NHSRC Quality Certification Unit |
| 143 | Output | Public health facilities with Kayakalp score greater than 70% | Number of public health facilities with Kayakalp score more than 70% (on external assessment) | Number | 888 | 976 | NHSRC Quality Certification Unit |
| 144 | Output | NQAS Certified public health facilities (National + State) in Aspirational Block | Percentage of NQAS Certified Facilities (%) in Aspirational Block | Percentage | 50% | 75% | NHSRC |
| Free Diagnostic Service Initiative | | | | | | | |

| Sl. No. | Indicator Type | Indicator Statement | Indicator | Unit | Target 2024-25 | Target 2025-26 | Source of data |
|---------------------------------------|----------------|--|--|------------|----------------|----------------|--|
| 145 | Output | Free Diagnostics Services | <p>Number of diagnostic test available at DH/SDH/CHC/PHC as per NEDL 2019 Calculated as average of total number of diagnostics tests available at each level of health facility divided by the minimum number of diagnostics tests specified in FDSI (14/63/97/111/134) guidelines</p> <p>Numerator: Number of Healthcare facility undertaking full menu of essential diagnostic tests prescribed in the FDSI guidelines</p> <p>Denominator: Total number of Primary Healthcare Facilities available in the State(Upto DH level)</p> | Percentage | 100% | 100% | HMIS/ State Reports/ Dashboards/ Assessment report |
| Blood Services & Disorders | | | | | | | |
| 146 | Output | Number of District Hospitals having Blood Banks | Percentage(%) of District Hospitals having functional Blood Bank | Percentage | 33 | 33 | E - Raktkosh, Blood Cell |
| 147 | Output | Voluntary blood donation | Voluntary blood donation against the blood collection units targeted for replacement/ donation | Percentage | 75000 | 75000 | E- Raktkosh, Blood Cell |
| 148 | Output | Blood component separator | Percentage of blood banks having blood component separator | Percentage | 53 | 53 | Blood Cell |
| 149 | Output | No of ICHH centres in the state at high prevalence districts | Number of integrated centres for hemoglobinopathies & Haemophilia in the district against no. of identified districts with high prevalence of hemoglobinopathies & haemophilia | Number | 10 | 10 | Blood Cell |
| 150 | | Sickle Cell Disease | Percentage of population screened for sickle cell disease against annual target | Percentage | 100% | 100% | Sickle Cell Portal |

| Sl. No. | Indicator Type | Indicator Statement | Indicator | Unit | Target 2024-25 | Target 2025-26 | Source of data |
|--|----------------|---|---|------------|----------------------|----------------------|--|
| 151 | | Sickle Cell Disease | Percentage of people registered on Sickle portalwith ABHA ID | Percentage | 100% | 100% | Sickle Cell Portal |
| 152 | | Sickle Cell Disease | Distribution of Sickle cell Status card | Number | 404065 | 404065 | Sickle Cell Portal |
| Comprehensive Primary Healthcare (CPHC) | | | | | | | |
| 153 | Output | Number of functional Ayushman Arogya Mandir | Numerator: Total functional AAMs in the state/ UT Denominator: Total primary healthcare facilities in State/UT as per the latest RHS | Percentage | 100% | 100% | AAM Portal |
| 154 | Output | AAMs providing expanded service packages | Numerator: No. of AAMs providing all 12 expandedrange of services. Denominator: Total functional AAMs in the state/ UT | Percentage | 100% | 100% | AAM Portal |
| 155 | Output | Footfall at AAMs (Receiving services for Preventive, promotive, curative, rehabilitative and palliative care) | Numerator: No. of AAMs reporting at least average footfall as per (norm of 60 footfalls per 1000 population): - Rural: SHC-AAM @ 300/month; PHC-AAM @1800/month - Urban: U-AAM @ 1200/month; UPHC-AAM @3000/month - Tribal: SHC-AAM @ 180/month; PHC-AAM @1200/month Denominator: Number of operational AAMs in ruralareas (SHC-AAM+PHC-AAM) | Percentage | 100% 100% 100% | 100% 100% 100% | AAM Portal |
| 156 | Output | Medicine at AAM | % of AAM where at least 80% of expanded range of medicines as per Essential list (Medicines: SHC-AAM- 105; PHC-AAM-171) against number of functional AAMs. | Percentage | 100% | 100% | AAM Portal AS per UT essential Drug Listfor AAM-SC-23 For AAM-PHC-71 |
| 157 | Output | Diagnostics at AAM | Percentage of AAM out of total functional AAMs inState/UT with | | 100% | 100% | |

| Sl. No. | Indicator Type | Indicator Statement | Indicator | Unit | Target 2024-25 | Target 2025-26 | Source of data |
|---------|----------------|--|--|------------|---|------------------------------|---------------------|
| | | | availability of diagnostics as per Essential list (Diagnostics: SHC-AAM-14; PHC-AAM-63) against number of functional AAMs. | Percentage | | | AAM Portal |
| 158 | Output | Adoption of SASHAKT & Training of AAM primary health care teams on expanded service packages | Numerator: No of ABHA verified primary health care team members (ASHA, MPW, CHO, SN and MO) registered in SASHAKT portal Denominator: Total number of in position primary healthcare team members (ASHA, MPW, CHO, SN and MO) in State/UT | Percentage | 100% | 100% | SASHAKT Portal |
| | | | Numerator: Total number of AAM primary healthcare team members (ASHA, MPW, CHO, SN and MO) trained in all expanded service packages Denominator: Total number of in-position primary healthcare team members (ASHA, MPW, CHO, SN and MO) in the state | Percentage | 100% Remarks-As recruitment process is going on we are planning to complete 100% after recruitment | 100% | SASHAKT Portal |
| 159 | Output | NCD screening | a) % of Individuals screened for NCD at AAMs - Hypertension and Diabetes Numerator: Individuals screened for NCD- Hypertension and Diabetes Denominator: 30+ population of State/UT | Percentage | HTN-85% DM-85% | HTN-90% DM-90% | National NCD portal |
| 160 | Output | | b) % of Individuals screened for NCD at AAMs - Oral cancer, Breast Cancer and Cervical Cancer Numerator: Individuals screened for NCD- cancers | Percentage | OC- 60% BC- 35% CC- 30% | OC-70% BC- 40% CC- 40% | National NCD portal |

| Sl. No. | Indicator Type | Indicator Statement | Indicator | Unit | Target 2024-25 | Target 2025-26 | Source of data |
|---------|----------------|--|---|------------|-----------------------------|-----------------------------|---------------------------|
| | | | Denominator: 30+ population of State/UT | | | | |
| 161 | Output | Wellness sessions at AAMs | Numerator: Number of wellness sessions conducted, a minimum of 10 wellness sessions per month Denominator: Total functional AAMs in the state) | Percentage | 100% | 100% | AAM Portal |
| 162 | Output | Tele- consultations started at AAMs | Numerator: Number of AAMs conducting a minimum of 25 teleconsultations per month Denominator: Total functional AAMs in the state) | Percentage | 100% | 100% | e-Sanjeevani portal |
| 163 | Output | JAS functioning | Numerator: Number of JAS constituted at AAMs conducted at least 10 meetings in a year Denominator: Total no. of JAS constituted at AAMs | Percentage | 100% | 100% | AAM Portal |
| 164 | Output | Functional AAM awarded Kayakalp Awards | Numerator: Number of AAMs scoring more than 70% in Kayakalp peer assessment Denominator: Total number of functional AAMs | Percentage | 10% of total functional AAM | 20% of total functional AAM | NHSRC Report & AAM Portal |
| 165 | Output | Functioning of VHSNC (in Rural areas) | Numerator: Number of VHSNCs that conducted at least 10 meetings in the year (against the norm of minimum one meeting every month) Denominator: Total VHSNCs formed | Percentage | 100% | 100% | AAM Portal |

| Sl. No. | Indicator Type | Indicator Statement | Indicator | Unit | Target 2024-25 | Target 2025-26 | Source of data | | |
|---|----------------|--|---|------------|----------------|----------------|--|-----|-----|
| 166 | Output | AAM primary healthcare team's incentives | <p>a) Numerator: Number of AAMs whose primary healthcare teams have received timely incentives (Performance Linked Payment and Team Based Incentives) minimum 10 times a year</p> <p>Denominator: Total number of functional AAMs</p> | Output | 4592 | 4592 | AAM Portal | | |
| AYUSH | | | | | | | | | |
| 167 | Output | Co- location of AYUSH facilities | Number of Public Health Facilities with Co-located AYUSH OPD Services | Number | 394 | 394 | State Report | | |
| Human Resource for Health | | | | | | | | | |
| 168 | Output | NHM HR in place | % of HRH in Position out of total posts approved underNHM* | Percentage | 95% | 95% | NHSRC HRH Division | | |
| 169 | Output | HRH availability as per IPHS | % of HRH available as per IPHS (HR in Place/IPHSrequirement x 100) for six key staff categories* | Percentage | | | NHSRC HRH Division | | |
| | | | o MPW(Male+Female) | | | | | 90% | 95% |
| | | | o Staff Nurses | | | | | 65% | 75% |
| | | | o Lab technicians** (**Reduction in gap% applicable only for those levels of facilities where lab services including HR for lab have been outsourced) | | | | | 65% | 75% |
| | | | o Pharmacists | | | | | 75% | 85% |
| | | | o Medical Officer-MBBS | | | | | 75% | 85% |
| o Clinical specialists | 85% | 90% | | | | | | | |
| Biomedical equipment Management & Maintenance Program (BMMP) | | | | | | | | | |
| 170 | Output | Equipment CAMC/ AMC | % of Equipment Covered under Comprehensive MaintenanceContract/ Annual Maintenance Contract/ BMMP. Calculated as total | Percentage | 100% | 100% | BMMP Dashboard/ State Equipment Inventory Software | | |

| Sl. No. | Indicator Type | Indicator Statement | Indicator | Unit | Target 2024-25 | Target 2025-26 | Source of data |
|--|----------------|--|--|------------|-------------------------------------|------------------------------------|---|
| | | | number of equipment covered underCMC/AMC divided by total number of equipment available at the facility (Average of all Facilities in percentage) | | | | (e-upkaran) |
| 171 | Output | Equipment Upkeep time | % upkeep time of equipment uptime Calculated as average of upkeep time of all equipment at each level of facility against the specified uptime in BMMP (DH-95%/CHC-90%/PHC-80%) | Percentage | PHC-80%; CHCs-90% and DH- 95% | PHC-80%; CHCs-90% and DH-95% | BMMP Dashboard/ State Equipment Inventory Software (e-upkaran) |
| 172 | Output | AERB Compliance | % of Public Health Facility certified as per AERB compliance Calculated as average number of health facilities (having X-Ray related equipment) registered on eLORA portal for AERB license divided by the total number of health facilities havingX-Ray related equipment. | Percentage | 100% | 100% | AERB Compliance certification dashboard |
| Health Management Information System (HMIS) | | | | | | | |
| 173 | Output | HMIS Reporting | Ensuring timely reporting of data by the State Data Manager/M&E/HMIS personnel by 20th of following month. Numerator: No. of health facilities reported data by 20th offollowing month. Denominator: Total no. of health facilities. | Percentage | 5962 (provisional) | 5962 (provisional) | HMIS IHIP Portal |
| Public Health Infrastructure | | | | | | | |
| 174 | Output | Infrastructure (Rural and Urban health care facilities- a. DH, b. SDH, c. CHCs, d. UCHCs, e. UPHCs, f. PHCs, g. SHCs, | Number of new constructions completed and handed over against the projects sanctioned. | Number | CHC - 17 | NA | State Report |

| SI No. | Indicator Type | Indicator Statement | Indicator | Unit | Target 2024-25 | Target 2025-26 | Source of data |
|--------|----------------|-----------------------------------|---|------------|----------------|----------------|----------------|
| | | h. Others | | | | | |
| 175 | Outcome | IPHS compliance | % Of health care facilities achieved IPHS compliance. | Percentage | - | - | State Report |
| 176 | Output | GRS & Health Help Desk | Average calls received per day (output measurement by cal efficiency): - numerator- Total calls received per day per cal operator against the denominator - Average 130 call received per Call operator per day with avg. call handling time of 3minutes. | Percentage | 160 per day | 160 per day | State Report |
| 177 | Output | GRS & Health Help Desk | % Of calls resolved out of total calls received service wise a. Health information, b. Counselling, c. SUMAN, d. ECD. | Percentage | 100% | 100% | State Report |
| 178 | Output | National Ambulance Services | % of Ambulances functional as per population norms (one BLS per 1 lakh Population and One ALS for every 5-lakhpopulation) | Percentage | 100% | 100% | State Report |
| 179 | Output | | Average response time per vehicle | Minutes | | | State Report |
| 180 | Output | MMU | Avg. no. of trips per MMU per month | Numbers | NA | NA | State Report |
| 181 | Output | | Average no. of lab investigations per MMU per day. | Numbers | - | - | State Report |
| 182 | Process | DH Strengthening as knowledge Hub | % of District hospitals- initiated any of the following courses:- a. DNB courses b. Nursing courses c. Allied health care courses | Percentage | NA | NA | State Report |

| Pool-wise approvals for 2024-25 and 2025-26 | | District: | Nizamabad |
|---|--|----------------|----------------|
| | | | Rs. In Lakhs |
| Sl. No | Pool | 2024-25 | 2025-26 |
| 1 | RCH Flexible Pool (including RI, IPPI, NIDDCP) | 980.99 | 972.26 |
| 2 | National Disease Control Programme (NDCP) Flexi Pool | 313.34 | 311.34 |
| 3 | Non-Communicable Diseases (NCDs) Flexi Pool | 233.94 | 244.53 |
| 4 | Health System Strengthening (HSS) - Urban | 378.36 | 412.85 |
| 5 | Health System Strengthening (HSS) Rural | 3435.42 | 3488.71 |
| | Total | 5342.05 | 5429.70 |

| Scheme-wise approvals for 2024-25 and 2025-26 | | | District: | Nizamabad |
|--|----------|---|-----------|--------------|
| | | | | Rs. In Lakhs |
| Pool | FMR Code | Scheme/ Activit | 2024-25 | 2025-26 |
| RCH Flexible Pool (including RI, IPPI, NIDDCP) | RCH.1 | Maternal Health | 331.83 | 329.43 |
| | RCH.2 | PC & PNDT Act | 3.12 | 3.19 |
| | RCH.3 | Child Health | 179.37 | 180.12 |
| | RCH.4 | Immunization | 123.73 | 123.73 |
| | RCH.5 | Adolescent Health | 98.10 | 98.10 |
| | RCH.6 | Family Planning | 40.05 | 40.05 |
| | RCH.7 | Nutrition | 200.76 | 193.61 |
| | RCH.8 | National Iodine Deficiency Disorders Control Programme (NIDDCP) | 4.04 | 4.04 |
| National Disease Control Programme (NDCP) Flexi Pool | NDCP.1 | Integrated Disease Surveillance Programme (IDSP) | 0.00 | 0.00 |
| | NDCP.2 | National Vector Borne Disease Control Programme (NVBDCP) | 57.58 | 57.98 |
| | NDCP.3 | National Leprosy Eradication Programme (NLEP) | 29.56 | 29.94 |
| | NDCP.4 | National Tuberculosis Elimination Programme (NTEP) | 223.41 | 220.63 |
| | NDCP.5 | National Viral Hepatitis Control Programme (NVHCP) | 0.00 | 0.00 |
| | NDCP.6 | National Rabies Control Programme (NRCP) | 2.80 | 2.80 |
| | NDCP.7 | Programme for Prevention and Control of Leptospirosis (PPCL) | 0.00 | 0.00 |
| | NDCP.8 | State specific Initiatives and Innovations | 0.00 | 0.00 |
| Non-Communicable Diseases (NCDs) Flexi Pool | NCD.1 | National Program for Control of Blindness and Vision Impairment (NPCB+VI) | 25.00 | 25.27 |
| | NCD.2 | National Mental Health Program (NMHP) | 5.90 | 5.90 |
| | NCD.3 | National Programme for Health Care for the Elderly (NPHCE) | 0.05 | 0.05 |
| | NCD.4 | National Tobacco Control Programme (NTCP) | 0.35 | 0.35 |
| | NCD.5 | National Programme for Prevention and Control of Diabetes, Cardiovascular Disease and Stroke (NPCDCS) | 182.30 | 191.75 |
| | NCD.6 | Pradhan Mantri National Dialysis Programme (PMNDP) | 0.00 | 0.00 |
| | NCD.7 | National Program for Climate Change and Human Health (NPCCHH) | 0.95 | 1.20 |
| | NCD.8 | National Oral health programme (NOHP) | 1.20 | 1.20 |
| | NCD.9 | National Programme on palliative care (NPPC) | 17.50 | 18.12 |
| | NCD.10 | National Programme for Prevention and Control of Fluorosis (NPPCF) | 0.00 | 0.00 |
| | NCD.11 | National Programme for Prevention and Control of Deafness (NPPCD) | 0.69 | 0.69 |
| | NCD.12 | National programme for Prevention and Management of Burn & Injuries | 0.00 | 0.00 |
| | NCD.13 | State specific Programme Interventions | 0.00 | 0.00 |
| Health System Strengthening (HSS) - Urban | HSS(U).1 | Comprehensive Primary Healthcare (CPHC) | 0.48 | 0.00 |
| | HSS(U).2 | Community Engagement | 61.20 | 61.20 |
| | HSS(U).3 | Public Health Institutions as per IPHS norms | 2.40 | 0.00 |
| | HSS(U).4 | Quality Assurance | 8.40 | 8.40 |
| | HSS(U).5 | HRH | 296.13 | 332.75 |
| | HSS(U).6 | Technical Assistance | 0.00 | 0.00 |
| | HSS(U).7 | Access | 0.00 | 0.00 |
| | HSS(U).8 | Innovation | 0.00 | 0.00 |
| | HSS(U).9 | Untied Grants | 9.75 | 10.50 |

| Scheme-wise approvals for 2024-25 and 2025-26 | | | District: | Nizamabad |
|---|----------|--|----------------|----------------|
| | | | | Rs. In Lakhs |
| Pool | FMR Code | Scheme/ Activit | 2024-25 | 2025-26 |
| Health System Strengthening (HSS) Rural | HSS.1 | Comprehensive Primary Healthcare (CPHC) | 5.04 | 11.40 |
| | HSS.2 | Blood Services & Disorders | 5.44 | 5.44 |
| | HSS.3 | Community Engagement | 246.25 | 246.25 |
| | HSS.4 | Public Health Institutions as per IPHS norms | 0.00 | 0.00 |
| | HSS.5 | Referral Transport | 424.70 | 424.70 |
| | HSS.6 | Quality Assurance | 84.85 | 84.85 |
| | HSS.7 | Other Initiatives to improve access | 7.69 | 7.69 |
| | HSS.8 | Inventory management | 34.93 | 34.93 |
| | HSS.9 | HRH | 2536.75 | 2582.04 |
| | HSS.10 | Enhancing HR | 0.00 | 0.00 |
| | HSS.11 | Technical Assistance | 43.01 | 44.66 |
| | HSS.12 | IT interventions and systems | 6.74 | 6.74 |
| | HSS.13 | Innovation | 0.00 | 0.00 |
| | HSS.14 | Untied Grants | 40.00 | 40.00 |
| | HSS.15 | Snakebite prevention | 0.00 | 0.00 |
| | | TOTAL | 5342.05 | 5429.70 |

Activity-wise approvals for 2024-25

District: Nizamabad

| FMR code | Programme / Theme | ROP Sl. No. | Activities | Unit Cost (Rs. in Lakhs) | Physical Target | SUM of Approved budget (Rs. In Lakhs) |
|----------|-------------------|-------------|--|--------------------------|-----------------|---------------------------------------|
| Grand | | | T O T A L | | | 5,342.05 |
| RCH.1 | Maternal Health | 1 | Monthly Village Health and Nutrition Days | 0.00200 | 14,484 | 28.97 |
| | | 3 | JSY Incentive to ASHA (Rs.600/- in urban areas and Rs.400/- in rural areas) | 0.00527 | 12,985 | 68.39 |
| | | 4 | Calcium tablets | 0.00219 | 13,237 | 29.02 |
| | | 5 | Free Referral Transport - JSSK for Pregnant Women | 0.00500 | 31,654 | 158.27 |
| | | 7 | Printing of MCP cards, safe motherhood booklets etc. | 0.00020 | 33,237 | 6.65 |
| | | 8 | Training of Nurse Practitioners in Midwifery | 4.67000 | 2 | 9.34 |
| | | 9 | Any other ASHA incentives (Towards MDR) | 0.00200 | 22 | 0.04 |
| | | 10 | Drugs for Safe Abortion (MMA) | 0.00380 | 464 | 1.76 |
| | | | MVA for Safe Abortion services | 0.30000 | 10 | 3.00 |
| | | | Training of Medical Officers in safe abortion | 0.50000 | 1 | 0.50 |
| | | 12 | Onsite Mentoring for DAKSHATA | 0.96000 | 1 | 0.96 |
| | | | Training of Staff Nurses/ANMs / LHVs in SBA | 0.72000 | 2 | 1.44 |
| | | 15 | LaQshya certifications and recertification (National & State Certification) under LaQshya & Incentive for certified facilities | 6.00000 | 1 | 6.00 |
| | | | Printing of labour room registers and case sheets/ LaQshya related printing | 0.00020 | 19,604 | 3.92 |
| | | 17 | Incentive/ Awards etc. to SN, ANMs etc. (Including group/team based incentives at sub-centre/PHC for primary care) | 0.00400 | 2,641 | 10.56 |
| | | | Training of MOs/SNs | 3.00000 | 1 | 3.00 |
| RCH.2 | PC & PNDD Act | 19 | Mobility support | 0.38000 | 1 | 0.38 |
| | | | Others (decoy operations, Mapping or surveys of ultrasound machines etc) | 0.50100 | 1 | 0.50 |
| | | 20 | Orientation and training of Human Resources for Health (HRH) and counsellors in public health response to Violence against women | 0.63630 | 1 | 0.64 |
| | | | Provision of free medical and surgical care to survivors of gender based violence | 1.60000 | 1 | 1.60 |
| RCH.3 | Child Health | 21 | Equipment for School Mobile health teams | 0.02300 | 15 | 0.35 |
| | | | Mobility support for RBSK Mobile health team | 5.16000 | 15 | 77.40 |
| | | | Other RBSK trainings (please specify) | 0.01000 | 15 | 0.15 |
| | | | Printing of RBSK card and registers | 0.16667 | 15 | 2.50 |
| | | | RBSK Convergence/Monitoring meetings | 0.02667 | 15 | 0.40 |
| | | | Support for RBSK: CUG connection per team and rental | 0.04200 | 15 | 0.63 |
| | | 22 | New born screening as per RBSK Comprehensive New-born Screening: Handbook for screening visible birth defects at all delivery points (please give details per unit cost , number of deliveries to be screened and the delivery points Add details) | 0.01340 | 15 | 0.20 |
| | | | Printing cost for DEIC | 0.16667 | 1 | 0.17 |
| | | 23 | Incentive for Home Based New-born Care programme | 0.00250 | 17,790 | 44.48 |
| | | | Printing of HBNC referral cards and other formats | 0.00002 | 11,182 | 0.22 |
| | | 24 | 2 weeks observership for facility based new-born care | 3.03030 | 1 | 3.03 |
| | | | 4 days Training for facility based new-born care | 3.03030 | 1 | 3.03 |
| | | | Operating expenses for NBCC | 0.05000 | 24 | 1.20 |
| | | | Operating expenses for NBSU | 1.75000 | 1 | 1.75 |
| | | | Operating expenses for SNCU | 15.00000 | 1 | 15.00 |
| | | | Other Child Health trainings (please specify) | 1.51510 | 1 | 1.52 |
| | | | Printing (SNCU data management) | 0.44600 | 1 | 0.45 |
| | | | Provision for State & District level (Meetings/ review meetings) | 0.18182 | 1 | 0.18 |
| | | 25 | Child Death Review | 2.78360 | 1 | 2.78 |
| | | | Printing of Child Death Review formats | 0.50000 | 1 | 0.50 |
| | | 26 | Any other IEC/BCC activities (please specify) including SAANS campaign IEC at state/district level | 0.50000 | 1 | 0.50 |
| | | | SAANS Training-State level Training & District level Trainings | 2.40120 | 1 | 2.40 |
| | | 27 | IMNCI Training for ANMs / LHVs | 1.51510 | 1 | 1.52 |
| | | 29 | Free Referral Transport - JSSK for Sick Infants | 18.61360 | 1 | 18.61 |
| | | 30 | Review/orientation meetings for child health programmes | 0.41000 | 1 | 0.41 |
| RCH.4 | Immunization | 32 | Alternative vaccine delivery in hard to reach areas | 0.00150 | 524 | 0.79 |
| | | | Alternative Vaccine Delivery in other areas | 0.00090 | 6,165 | 5.55 |
| | | | Any other (please specify) | 0.10900 | 1 | 0.11 |
| | | | ASHA Incentive under Immunization | 0.00242 | 29,466 | 71.45 |
| | | | Cold chain maintenance | 0.01000 | 40 | 0.40 |
| | | | Focus on slum & underserved areas in urban areas/alternative vaccinator for slums (only where regular ANM under NUHM not engaged) | 0.06480 | 42 | 2.72 |
| | | | For consolidation of micro plans at block level | 0.02000 | 1 | 0.02 |
| | | | Hub Cutter | 0.01500 | 77 | 1.16 |
| | | | IEC activities for Immunization | 3.56060 | 1 | 3.56 |

Activity-wise approvals for 2024-25

District: Nizamabad

| FMR code | Programme / Theme | ROP Sl. No. | Activities | Unit Cost (Rs. in Lakhs) | Physical Target | SUM of Approved budget (Rs. In Lakhs) |
|----------|---|-------------|---|--------------------------|-----------------|---------------------------------------|
| RCH.5 | Adolescent Health | | Mobility support for supervision at State level (including SAANS supportive supervision) | 3.00000 | 1 | 3.00 |
| | | | POL for vaccine delivery from State to district and from district to PHC/CHCs | 2.00000 | 1 | 2.00 |
| | | | Printing and dissemination of Immunization cards, tally sheets, monitoring forms etc. | 0.01000 | 225 | 2.25 |
| | | | Quarterly review meetings exclusive for RI at block level | 1.11800 | 1 | 1.12 |
| | | | Quarterly review meetings exclusive for RI at district level with Block MOs, CDPO, and other stake holders | 0.37500 | 1 | 0.38 |
| | | | Red/Black plastic bags etc.for Bio medical waste mgt | 0.00003 | 18,690 | 0.56 |
| | | | Support for Quarterly State level review meetings of district officer | 0.11000 | 1 | 0.11 |
| | | | To develop micro plan at sub-centre level | 0.00100 | 225 | 0.23 |
| | | | Training under Immunisation | 5.45000 | 1 | 5.45 |
| | | 33 | Pulse Polio operating costs | 15.54400 | 1 | 15.54 |
| | | 34 | NGO Programme/ Grant in Aid to NGO | 4.38240 | 1 | 4.38 |
| | | | Operational cost of e-VIN (like temperature logger sim card and Data sim card for e-VIN) | 2.96180 | 1 | 2.96 |
| | | 35 | AFHS training of ANM/LHV/MPW | 0.02381 | 8 | 0.19 |
| | | | AFHS training of Medical Officers | 0.02041 | 8 | 0.16 |
| | | | Operating expenses for AH/ RKSJ Clinics | 0.12000 | 8 | 0.96 |
| | | 36 | IFA tablets under WIFS (10-19 yrs.) | 0.00009 | 189,740 | 17.76 |
| | | | WIFS trainings (Block) | 0.01212 | 1 | 0.01 |
| | | | WIFS trainings (District) | 0.03030 | 1 | 0.03 |
| | | 37 | Adolescent Health Kit | 0.00144 | 54,700 | 78.77 |
| | | 38 | Organizing Adolescent Health day | 0.02653 | 8 | 0.21 |
| RCH.6 | Family Planning | 42 | Compensation for female sterilization (Provide breakup for cases covered in public facility, private facility. Enhanced Compensation Scheme (if applicable) additionally provide number of PPS done. Female sterilization done in MPV districts may also be budgeted in this head and the break up to be reflected) | 0.01000 | 2,684 | 26.84 |
| | | | Female sterilization fixed day services | 0.10000 | 20 | 2.00 |
| | | | Laprosopes | 0.04000 | 10 | 0.40 |
| | | 43 | Compensation for male sterilization/NSV (Provide breakup for cases covered in public facility, private facility. Male sterilization done in MPV districts may also be budgeted in this head and the break up to be reflected) | 0.01500 | 106 | 1.59 |
| | | | Male Sterilization fixed day services | 0.10000 | 5 | 0.50 |
| | | 44 | Compensation for IUCD insertion at health facilities (including fixed day services at SHC and PHC) [Provide breakup: Private Sector] | 0.00020 | 326 | 0.07 |
| | | | PAIUCD Services: Compensation to beneficiary per PAIUCD insertion | 0.00300 | 29 | 0.09 |
| | | | PPIUCD services: Compensation to beneficiary for PPIUCD insertion | 0.00300 | 200 | 0.60 |
| | | 45 | Injectable contraceptive incentive for beneficiaries | 0.00100 | 1,000 | 1.00 |
| | | | Training of Medical officers (Injectable Contraceptive Trainings) | 0.20000 | 1 | 0.20 |
| | | 48 | FP-LMIS training | 0.52000 | 1 | 0.52 |
| | | 49 | IEC & promotional activities for Vasectomy Fortnight celebration | 0.30000 | 1 | 0.30 |
| | IEC & promotional activities for World Population Day celebration | 0.20000 | 1 | 0.20 | | |
| 50 | Any other (Condom Boxes) | 0.01000 | 66 | 0.66 | | |
| RCH.7 | Nutrition | | ASHA incentive under ESB scheme for promoting spacing of births | 0.00500 | 998 | 4.99 |
| | | | FP review meetings (As per Hon'ble SC judgement) | 0.10000 | 1 | 0.10 |
| | | 52 | Albendazole Tablets for non-pregnant & non-lactating women in Reproductive Age (20-49 years) | 0.00002 | 85,160 | 1.45 |
| | | | Albendazole tablets for pregnant women | 0.00002 | 31,490 | 0.54 |
| | | | Anaemia Mukh Bharat | 0.30000 | 1 | 0.30 |
| | | | Any other Drugs & Supplies (Inj Ferric Carboxymaltose for Management of postnatal / lactating mothers with severe anaemia) | 0.01800 | 1,760 | 31.68 |
| | | | Folic Acid Tablets (400 mcg) for Pregnant & Lactating Mothers | 0.00000 | 2,848,860 | 3.15 |
| | | | IFA syrups (with auto dispenser) for children (6- 60 months) | 0.00013 | 294,742 | 38.32 |
| | | | IFA tablets (IFA WIFS Junior tablets- pink sugar coated) for children (5-10 yrs.) | 0.00000 | 5,926,800 | 17.78 |
| | | | IFA tablets for non-pregnant & non-lactating women in Reproductive Age (20-49 years) | 0.00000 | 1,281,592 | 3.84 |
| | | | IFA tablets for Pregnant & Lactating Mothers | 0.00000 | 12,127,320 | 36.38 |
| | | | Procurement of Iron sucrose for Pregnant women | 0.00016 | 18,620 | 2.98 |
| 53 | Albendazole Tablets for (10-19 years age group) | 0.00002 | 418,478 | 7.11 | | |

Activity-wise approvals for 2024-25

District: Nizamabad

| FMR code | Programme / Theme | ROP Sl. No. | Activities | Unit Cost (Rs. in Lakhs) | Physical Target | SUM of Approved budget (Rs. In Lakhs) |
|----------|--|-------------|---|--------------------------|---------------------------|---------------------------------------|
| RCH.8 | National Iodine Deficiency Disorders Control Programme (NIDDCP) | | Albendazole Tablets for children (5-10 yrs.) | 0.00002 | 342,458 | 5.82 |
| | | | Albendazole Tablets for children (6-60months) | 0.00002 | 311,770 | 5.30 |
| | | | Incentive for National Deworming Day for mobilising out of school children | 0.00200 | 1,207 | 2.41 |
| | | | Media Mix of Mid Media/ Mass Media | 0.27273 | 1 | 0.27 |
| | | | Printing of IEC materials and reporting formats etc. for National Deworming Day | 0.30303 | 1 | 0.30 |
| | | 54 | Incentive for referral of SAM cases to NRC and for follow up of discharge SAM children from NRCs | 0.00300 | 303 | 0.91 |
| | | | Nutritional Rehabilitation Centres (NRC) | 0.06060 | 1 | 0.06 |
| | | | Operating expenses for NRCs | 17.60000 | 1 | 17.60 |
| | | 55 | Vitamin A syrup | 0.00160 | 6,142 | 9.83 |
| | | 56 | 4 days Trainings on IYCF for MOs, SNs, ANMs of all DPs and SCs (ToT, 4 days IYCF Trainings & 1 day Sensitisation on MAA Program) | 0.50000 | 1 | 0.50 |
| | | | ASHA incentive under MAA programme @ Rs 100 per ASHA for quarterly mother's meeting | 0.00400 | 1,207 | 4.83 |
| | | 57 | Others (LMUs) | 0.40900 | 1 | 0.41 |
| | | 58 | Incentive for IDCF for prophylactic distribution of ORS to family with under-five children. | 0.00100 | 1,207 | 1.21 |
| | | NDCP.2 | National Vector Borne Disease Control Programme (NVBDCP) | | ORS | 0.00003 |
| | Zinc | | | 0.00000 | 527,364 | 1.58 |
| 61 | Monitoring and Award/ Recognition for MAA programme | | | 0.10000 | 1 | 0.10 |
| 62 | ASHA Incentive under NIDDCP | | | 0.00300 | 1,212 | 3.64 |
| | Health Education & Publicity for NIDDCP | | | 0.40000 | 1 | 0.40 |
| 64 | ACT (For Non Project states) | | | 0.00048 | 5 | 0.00 |
| | Any other (please specify) | | | 0.40000 | 1 | 0.40 |
| | ASHA Incentive/ Honorarium for Malaria and LLIN distribution | | | 0.00025 | 9,631 | 2.44 |
| | Biological and Environmental Management through VHSC | | | 0.01000 | 15 | 0.15 |
| | Chloroquine phosphate tablets | | | 0.00001 | 2,000 | 0.02 |
| | IEC/BCC for Malaria | | | 22.50000 | 0 | 0.61 |
| | Larvivorous Fish support | | | 0.10000 | 1 | 0.10 |
| | Monitoring , Evaluation & Supervision & Epidemic Preparedness (Only Mobility Expenses) | | | 1.98000 | 1 | 1.98 |
| NDCP.3 | National Leprosy Eradication Programme (NLEP) | | | | Primaquine tablets 2.5 mg | 0.00001 |
| | | | Primaquine tablets 7.5 mg | 0.00001 | 1,000 | 0.01 |
| | | | RDT Malaria – bi-valent (For Non Project states) | 0.00012 | 2,500 | 0.29 |
| | | | State Task Force, State Technical Advisory Committee meeting, District coordination meeting, Cross border meetings Sub National Malaria Elimination Certification process (Malaria) | 0.15580 | 1 | 0.16 |
| | | | Training / Capacity Building (Malaria) | 0.77670 | 1 | 0.78 |
| | | 66 | Procurement of Insecticides (Technical Malathion/Cyphenothrin) | 0.00555 | 150 | 0.83 |
| | | 67 | ASHA Incentive for Dengue and Chikungunya | 0.01000 | 1,308 | 13.08 |
| | | | Dengue & Chikungunya: Vector Control, environmental management & fogging machine | 0.50000 | 20 | 10.00 |
| | | | Dengue NS1 antigen kit | 0.08904 | 25 | 2.23 |
| | | | Epidemic preparedness (Dengue & Chikungunya) | 0.50000 | 1 | 0.50 |
| | | | IEC/BCC for Social mobilization (Dengue and Chikungunya) | 0.50000 | 1 | 0.50 |
| | | | Sentinel surveillance Hospital recurrent | 1.00000 | 1 | 1.00 |
| | | | Temephos, Bti (AS) / Bti (wp) (for polluted & non polluted water) | 0.00908 | 100 | 0.91 |
| | | | Test kits (Nos.) to be supplied by Gol (kindly indicate numbers of ELISA based NS1 kit and Mac ELISA Kits required separately) | 0.11150 | 20 | 2.23 |
| | Training / Workshop (Dengue and Chikungunya) | 0.30147 | 1 | 0.30 | | |
| 68 | Honorarium for Drug Distribution including ASHAs and supervisors involved in MDA | 0.00600 | 740 | 4.44 | | |
| | Lymphatic Filariasis: Morbidity Management | 0.00500 | 1,818 | 9.09 | | |
| | Post MDA Surveillance (for those districts which have cleared TAS) | 0.07500 | 7 | 0.53 | | |
| | Sub-national Disease Free Certification: Lymphatic Filariasis | 5.00000 | 1 | 5.00 | | |
| 69 | Aids/Appliance to Leprosy patiets | 0.17000 | 1 | 0.17 | | |
| | ASHA Incentive for Treatment completion of MB cases (@ Rs 600) | 0.00600 | 19 | 0.11 | | |
| | ASHA Incentive for Treatment completion of PB cases (@ Rs 400) | 0.00400 | 13 | 0.05 | | |

Activity-wise approvals for 2024-25

District: Nizamabad

| FMR code | Programme / Theme | ROP Sl. No. | Activities | Unit Cost (Rs. in Lakhs) | Physical Target | SUM of Approved budget (Rs. In Lakhs) |
|----------|---|-------------|--|--------------------------|-----------------|---------------------------------------|
| NDCP.4 | National Tuberculosis Elimination Programme (NTEP) | | Incentive for ASHA/AWW/Volunteer/etc for detection of Leprosy (Rs 250 for detection of an early case before onset of any visible deformity, Rs 200 for detection of new case with visible deformity in hands, feet or eye) | 0.02108 | 1,207 | 25.44 |
| | | | Supportive drugs, lab. Reagents | 0.48000 | 1 | 0.48 |
| | | 70 | Leprosy footwear | 0.00400 | 100 | 0.40 |
| | | 72 | Capacity building under NLEP | 0.50000 | 1 | 0.50 |
| | | | District Cell - Consumables | 0.35000 | 1 | 0.35 |
| | | | Mobility Support: District Cell | 1.50000 | 1 | 1.50 |
| | | | Office operation & Maintenance - District Cell | 0.30000 | 1 | 0.30 |
| | | | Travel expenses - Contractual Staff at District level | 0.25000 | 1 | 0.25 |
| | | 73 | Civil Works under TB program | 4.00000 | 1 | 4.00 |
| | | | CME (Medical Colleges) | 0.05000 | 2 | 0.10 |
| | | | Community engagement activities | 7.78000 | 1 | 7.78 |
| | | | Drug transportation charges | 0.50000 | 1 | 0.50 |
| | | | Procurement of sleeves and drug boxes | 2.63000 | 1 | 2.63 |
| | | | | 8.63000 | 1 | 8.63 |
| | | | Research for medical colleges | 0.30000 | 1 | 0.30 |
| | | | Sample collection & transportation charges | 0.01198 | 131 | 1.57 |
| | | | State/District TB Forums | 0.10000 | 1 | 0.10 |
| | | | Sub-national Disease Free Certification: Tuberculosis | 10.00000 | 1 | 10.00 |
| | | | Trainings under NTEP | 0.04955 | 22 | 1.09 |
| | | | | 0.50000 | 1 | 0.50 |
| | Treatment Supporter Honorarium (Rs 1000) | 0.01000 | 1,748 | 17.48 | | |
| | Vehicle hiring for drug transportation | 1.00000 | 1 | 1.00 | | |
| 74 | TB Patient Nutritional Support under Nikshay Poshan Yojana | 93.81000 | 1 | 93.81 | | |
| 75 | Any PPM-PP/NGO Support | 4.00000 | 1 | 4.00 | | |
| | Incentive for informant (Rs 500) | 0.00499 | 623 | 3.11 | | |
| | Multi-sectoral collaboration activities | 1.06000 | 1 | 1.06 | | |
| | Public Private Support Agency (PPSA) | 39.37000 | 1 | 39.37 | | |
| 76 | Diagnosis and Management under Latent TB Infection Management | 8.96000 | 1 | 8.96 | | |
| 77 | Laboratory Materials for TB program | 9.10000 | 1 | 9.10 | | |
| | Treatment Supporter Honorarium (Rs 5000) | 0.05000 | 102 | 5.10 | | |
| 78 | ACSM (State & district) | 0.50000 | 1 | 0.50 | | |
| | TB Harega Desh Jeetega' Campaign | 2.72000 | 1 | 2.72 | | |
| NDCP.6 | National Rabies Control Programme (NRCP) | 84 | IEC/BCC under NRCP: Rabies Awareness and Do's and Don'ts in the event of Animal Bites | 1.00000 | 1 | 1.00 |
| | | | Monitoring and surveillance (Review meetings, Travel) under NRCP | 0.50000 | 1 | 0.50 |
| | | | Printing of formats for Monitoring and surveillance | 0.50000 | 1 | 0.50 |
| | | | Strengthen Animal bite and human rabies cases surveillance data entry support | 0.60000 | 1 | 0.60 |
| | | | Trainings of Medical Officers and Health Workers under NRCP | 0.19500 | 1 | 0.20 |
| NCD.1 | National Program for Control of Blindness and Vision Impairment (NPCB+VI) | 87 | Assistance for consumables/drugs/medicines to the Govt./District Hospital for Cat sx etc | 0.01000 | 1,000 | 10.00 |
| | | 88 | Reimbursement for cataract operation for NGO and Private Practitioners as per NGO norms @ Rs. 2000 | 0.02000 | 700 | 14.00 |
| NCD.2 | National Mental Health Program (NMHP) | 93 | Screening and free spectacles to school children | 0.00250 | 400 | 1.00 |
| | | 97 | Miscellaneous/ Travel | 2.40000 | 1 | 2.40 |
| | | | Procurement of Mental Health Drugs for PHCs | 3.00000 | 1 | 3.00 |
| | Training of PHC Medical Officers, Nurses, Paramedical Workers & Other Health Staff working under NMHP | 0.50000 | 1 | 0.50 | | |
| NCD.3 | National Programme for Health Care for the Elderly (NPHCE) | 99 | Training of doctors and staff at DH level under NPHCE | 0.05000 | 1 | 0.05 |
| NCD.4 | National Tobacco Control Programme (NTCP) | 104 | Coverage of Public School and Pvt School | 0.05000 | 1 | 0.05 |
| | | | Training of PRI's representatives/ Police personnel/ Teachers/ Transport personnel/ NGO personnel/ other stakeholders | 0.25000 | 1 | 0.25 |
| | | 106 | IEC/BCC for NTCP | 0.05000 | 1 | 0.05 |
| NCD.5 | National Programme for Prevention and Control of Diabetes, Cardiovascular Disease and Stroke (NPCDCS) | 107 | District NCD Clinic | 2.50000 | 1 | 2.50 |

Activity-wise approvals for 2024-25

District: Nizamabad

| FMR code | Programme / Theme | ROP Sl. No. | Activities | Unit Cost (Rs. in Lakhs) | Physical Target | SUM of Approved budget (Rs. In Lakhs) | | |
|----------|---|-------------|---|--------------------------|---|---------------------------------------|---|------|
| NCD.7 | National Program for Climate Change and Human Health (NPCCHH) | | District NCD Clinic: Strengthening of lab, Mobility, Miscellaneous & Contingencies | 1.00000 | 1 | 1.00 | | |
| | | | Drugs & consumables for Diabetes, Hypertension, | 0.00004 | 1,712,899 | 63.03 | | |
| | | 108 | CHC NCD Clinic | 0.32000 | 9 | 2.88 | | |
| | | | CHC NCD Clinic: Mobility , Miscellaneous & Contingencies | 1.00000 | 9 | 9.00 | | |
| | | | NCD Clinics at CHC/SDH | 10.00000 | 9 | 90.00 | | |
| | | 109 | Innovation STEMI | 1.00000 | 1 | 1.00 | | |
| | | 110 | COPD Drugs and Consumables in whole district | 0.00000 | 1,712,899 | 7.19 | | |
| | | | District NCD Cell | 0.70000 | 1 | 0.70 | | |
| | | | District NCD Cell (TA,DA, POL) | 5.00000 | 1 | 5.00 | | |
| | | 114 | IEC on Climate Sensitive Diseases at Block , District and State level – Air pollution, Heat and other relevant Climate Sensitive diseases | 0.50000 | 1 | 0.50 | | |
| | | | Printing activities for NPCCHH | 0.15000 | 1 | 0.15 | | |
| | | | Trainings of Medical Officers, Health Workers and Programme officers under NPCCHH | 0.30000 | 1 | 0.30 | | |
| | | NCD.8 | National Oral health programme (NOHP) | 115 | Dental consumables | 0.24000 | 5 | 1.20 |
| | | NCD.9 | National Programme on palliative care (NPPC) | 119 | Miscellaneous including Travel/ POL/ Stationary/ Communications/ Drugs etc. | 9.00000 | 1 | 9.00 |
| | Palliative care program | | | 8.00000 | 1 | 8.00 | | |
| | Training of PHC Medical Officers, nurses, Paramedical Workers & Other Health Staff under NPPC | | | 0.50000 | 1 | 0.50 | | |
| NCD.11 | National Programme for Prevention and Control of Deafness (NPPCD) | 122 | Trainings at CHC/Sub-Divisional Hospital | 0.06000 | 9 | 0.54 | | |
| | | | Trainings at District Hospital | 0.15000 | 1 | 0.15 | | |
| HSS(U).1 | Comprehensive Primary Healthcare (CPHC) | 127 | Development and operation of Ayushman Arogya Mandir - Urban | 0.03000 | 16 | 0.48 | | |
| HSS(U).2 | Community Engagement | 130 | Incentives for routine activities (NUHM-Non-Metro) | 0.24000 | 255 | 61.20 | | |
| HSS(U).3 | Public Health Institutions as per IPHS norms | 137 | Rent for UPHC | 2.40000 | 1 | 2.40 | | |
| HSS(U).4 | Quality Assurance | 139 | Quality Assurance incentives | 2.00000 | 3 | 6.00 | | |
| | | 140 | Kayakalp Assessments | 0.40000 | 1 | 0.40 | | |
| HSS(U).5 | HRH | | Kayakalp Awards | 2.00000 | 1 | 2.00 | | |
| | | 142 | Total HR (Urban) | 2.53103 | 117 | 296.13 | | |
| HSS(U).9 | Untied Grants | 149 | Government Building | 1.75000 | 5 | 8.75 | | |
| | | | Rented Building | 1.00000 | 1 | 1.00 | | |
| HSS.1 | Comprehensive Primary Healthcare (CPHC) | 150 | Development and operation of Ayushman Arogya Mandir - Rural | 0.03000 | 168 | 5.04 | | |
| HSS.2 | Blood Services & Disorders | 156 | Blood Bank/Blood Storage Unit (BSU) Training | 0.12500 | 2 | 0.25 | | |
| | | | Consumables for blood services | 0.00250 | 1,200 | 3.00 | | |
| | | | Equipment for Blood Banks/Blood storage units | 0.42368 | 4 | 1.69 | | |
| | | | Equipment for Day Care Centre | 0.50000 | 1 | 0.50 | | |
| HSS.3 | Community Engagement | 159 | ASHA incentives for routine activities | 0.21600 | 967 | 208.87 | | |
| | | | Supervision costs by ASHA facilitators(12 months) | 0.12000 | 60 | 7.20 | | |
| | | | Uniform | 0.02500 | 1,207 | 30.18 | | |
| HSS.5 | Referral Transport | 171 | Emergency ambulance/Dial 108 -ALS-Agency owned | 29.41104 | 2 | 58.82 | | |
| | | 172 | Emergency ambulance/Dial 108 -BLS-Agency owned | 23.09544 | 11 | 254.05 | | |
| | | | Emergency ambulance/Dial 108 -BLS-Govt owned | 16.48656 | 5 | 82.43 | | |
| | | 174 | Other ambulances | 29.40000 | 1 | 29.40 | | |
| HSS.6 | Quality Assurance | 175 | Incentivisation on attainment of NQAS certification (Please provide details in Annexure) | 2.75000 | 12 | 33.00 | | |
| | | | Quality Assurance Certifications, Re-certification (National & State Certification) under NQAS | 14.00000 | 1 | 14.00 | | |
| | | 176 | Assessments | 3.35000 | 1 | 3.35 | | |
| | | | Biomedical Waste Management | 0.60000 | 32 | 19.20 | | |
| | | | Kayakalp Awards | 0.46875 | 32 | 15.00 | | |
| | | | Kayakalp Trainings | 0.30000 | 1 | 0.30 | | |
| HSS.7 | Other Initiatives to improve access | 180 | Paracetamol drops | 0.00008 | 35,361 | 2.75 | | |
| | | | Paracetamol oral solution | 0.00007 | 70,720 | 4.94 | | |
| HSS.8 | Inventory management | 184 | Comprehensive Bio-Medical Equipment Maintenance Programme | 34.93000 | 1 | 34.93 | | |
| HSS.9 | HRH | 185 | Total HR (Rural) | 1859.95000 | 1 | 1,859.95 | | |
| | | 187 | Remuneration for CHOs | 4.80000 | 141 | 676.80 | | |
| HSS.11 | Technical Assistance | 194 | Medical Colleges (Any meetings) | 0.04000 | 1 | 0.04 | | |
| | | | Mobility Support - BPMU/Block | 3.96000 | 3 | 11.88 | | |

Activity-wise approvals for 2025-26

District: Nizamabad

| FMR code | Programme / Theme | ROP Sl. No. | Particulars | Unit Cost (Rs. in Lakhs) | Physical Target | SUM of Approved budget (Rs. In Lakhs) |
|----------|-------------------|----------------|--|-----------------------------|--------------------|--|
| Grand | | | T O T A L | | | 5,429.70 |
| RCH.1 | Maternal Health | 1 | Monthly Village Health and Nutrition Days | 0.00200 | 14484 | 28.97 |
| | | 3 | JSY Incentive to ASHA (Rs.600/- in urban areas and Rs.400/- in rural areas) | 0.00527 | 12985 | 68.39 |
| | | 4 | Calcium tablets | 0.00219 | 13237 | 29.02 |
| | | 5 | Free Referral Transport - JSSK for Pregnant Women | 0.00500 | 31654 | 158.27 |
| | | 7 | Printing of MCP cards, safe motherhood booklets etc. | 0.00020 | 33237 | 6.65 |
| | | 8 | Training of Nurse Practitioners in Midwifery | 4.67000 | 2 | 9.34 |
| | | 9 | Any other ASHA incentives (Towards MDR) | 0.00200 | 22 | 0.04 |
| | | 10 | Drugs for Safe Abortion (MMA) | 0.00380 | 464 | 1.76 |
| | | | MVA for Safe Abortion services | 0.30000 | 2 | 0.60 |
| | | | Training of Medical Officers in safe abortion | 0.50000 | 1 | 0.50 |
| | | 12 | Onsite Mentoring for DAKSHATA | 0.96000 | 1 | 0.96 |
| | | | Training of Staff Nurses/ANMs / LHV's in SBA | 0.72000 | 2 | 1.44 |
| | | 15 | LaQshya certifications and recertification (National & State Certification) under LaQshya & Incentive for certified facilities | 6.00000 | 1 | 6.00 |
| | | | Printing of labour room registers and case sheets/ LaQshya related printing | 0.00020 | 19604 | 3.92 |
| | | 17 | Incentive/ Awards etc. to SN, ANMs etc. (Including group/team based incentives at sub-centre/PHC for primary care) | 0.00400 | 2641 | 10.56 |
| | | | Training of MOs/SNs | 3.00000 | 1 | 3.00 |
| RCH.2 | PC & PNDT Act | 19 | Mobility support | 0.38000 | 1 | 0.38 |
| | | | Others (decoy operations, Mapping or surveys of ultrasound machines etc) | 0.54545 | 1 | 0.55 |
| | | 20 | Orientation and training of Human Resources for Health (HRH) and counsellors in public health response to Violence against women | 0.63630 | 1 | 0.64 |
| | | | Provision of free medical and surgical care to survivors of gender based violence | 1.63121 | 1 | 1.63 |
| RCH.3 | Child Health | 21 | Equipment for School Mobile health teams | 0.02300 | 15 | 0.35 |
| | | | Mobility support for RBSK Mobile health team | 5.16000 | 15 | 77.40 |
| | | | Other RBSK trainings (please specify) | 0.01000 | 15 | 0.15 |
| | | | Printing of RBSK card and registers | 0.16667 | 15 | 2.50 |
| | | | RBSK Convergence/Monitoring meetings | 0.02667 | 15 | 0.40 |
| | | | Support for RBSK: CUG connection per team and rental | 0.04200 | 15 | 0.63 |
| | | 22 | New born screening as per RBSK Comprehensive New-born Screening: Handbook for screening visible birth defects at all delivery points (please give details per unit cost , number of deliveries to be screened and the delivery points Add details) | 0.01340 | 15 | 0.20 |
| | | | Printing cost for DEIC | 0.16667 | 1 | 0.17 |
| | | 23 | Incentive for Home Based New-born Care programme | 0.00250 | 17790 | 44.48 |
| | | | New ASHA HBNC Kits | 0.01000 | 286 | 2.86 |
| | | | Printing of HBNC referral cards and other formats | 0.00002 | 11182 | 0.22 |
| | | | Replenishment of ASHA HBNC and HBYC kits | 0.01000 | 395 | 3.95 |
| | | 24 | Operating expenses for NBCC | 0.05000 | 24 | 1.20 |
| | | | Operating expenses for NBSU | 1.75000 | 1 | 1.75 |
| | | | Operating expenses for SNCU | 15.00000 | 1 | 15.00 |
| | | | Other Child Health trainings (please specify) | 1.51510 | 1 | 1.52 |
| | | | Printing (SNCU data management) | 0.44600 | 1 | 0.45 |
| | | | Provision for State & District level (Meetings/ review meetings) | 0.18182 | 1 | 0.18 |
| | | 25 | Child Death Review | 2.78360 | 1 | 2.78 |

Activity-wise approvals for 2025-26

District: Nizamabad

| FMR code | Programme / Theme | ROP Sl. No. | Particulars | Unit Cost (Rs. in Lakhs) | Physical Target | SUM of Approved budget (Rs. In Lakhs) | | |
|----------|--|----------------|---|-----------------------------|------------------------------------|--|---|-------|
| RCH.4 | Immunization | 26 | Printing of Child Death Review formats | 0.50000 | 1 | 0.50 | | |
| | | 26 | Any other IEC/BCC activities (please specify) including SAANS campaign IEC at state/district level | 0.50000 | 1 | 0.50 | | |
| | | | SAANS Training-State level Training & District level Trainings | 2.40120 | 1 | 2.40 | | |
| | | 27 | IMNCI Training for ANMs / LHV's | 1.51510 | 1 | 1.52 | | |
| | | 29 | Free Referral Transport - JSSK for Sick Infants | 18.61360 | 1 | 18.61 | | |
| | | 30 | Review/orientation meetings for child health programmes | 0.41000 | 1 | 0.41 | | |
| | | 32 | Alternative vaccine delivery in hard to reach areas | 0.00150 | 524 | 0.79 | | |
| | | | Alternative Vaccine Delivery in other areas | 0.00090 | 6165 | 5.55 | | |
| | | | Any other (please specify) | 0.10900 | 1 | 0.11 | | |
| | | | ASHA Incentive under Immunization | 0.00242 | 29466 | 71.45 | | |
| | | | Cold chain maintenance | 0.01000 | 40 | 0.40 | | |
| | | | Focus on slum & underserved areas in urban areas/alternative vaccinator for slums (only where regular ANM under NUHM not engaged) | 0.06480 | 42 | 2.72 | | |
| | | | For consolidation of micro plans at block level | 0.02000 | 1 | 0.02 | | |
| | | | Hub Cutter | 0.01500 | 77 | 1.16 | | |
| | | | IEC activities for Immunization | 3.56060 | 1 | 3.56 | | |
| | | | Mobility support for supervision at State level (including SAANS supportive supervision) | 3.00000 | 1 | 3.00 | | |
| | | | POL for vaccine delivery from State to district and from district to PHC/CHCs | 2.00000 | 1 | 2.00 | | |
| | | | Printing and dissemination of Immunization cards, tally sheets, monitoring forms etc. | 0.01000 | 225 | 2.25 | | |
| | | | Quarterly review meetings exclusive for RI at block level | 1.11800 | 1 | 1.12 | | |
| | | | Quarterly review meetings exclusive for RI at district level with Block MOs, CDPO, and other stake holders | 0.37500 | 1 | 0.38 | | |
| | | | Red/Black plastic bags etc.for Bio medical waste mgt | 0.00003 | 18690 | 0.56 | | |
| | | | Support for Quarterly State level review meetings of district officer | 0.11000 | 1 | 0.11 | | |
| | | | To develop micro plan at sub-centre level | 0.00100 | 225 | 0.23 | | |
| | | | Training under Immunisation | 5.45000 | 1 | 5.45 | | |
| | | RCH.5 | Adolescent Health | 33 | Pulse Polio operating costs | 15.54400 | 1 | 15.54 |
| | | | | 34 | NGO Programme/ Grant in Aid to NGO | 4.38240 | 1 | 4.38 |
| | Operational cost of e-VIN (like temperature logger sim card and Data sim card for e-VIN) | | | 2.96180 | 1 | 2.96 | | |
| 35 | AFHS training of ANM/LHV/MPW | | | 0.02381 | 8 | 0.19 | | |
| | AFHS training of Medical Officers | | | 0.02041 | 8 | 0.16 | | |
| | Operating expenses for AH/ RKSK Clinics | | | 0.12000 | 8 | 0.96 | | |
| 36 | IFA tablets under WIFS (10-19 yrs.) | | | 0.00009 | 189740 | 17.76 | | |
| | WIFS trainings (Block) | | | 0.01212 | 1 | 0.01 | | |
| | WIFS trainings (District) | | | 0.03030 | 1 | 0.03 | | |
| | Adolescent Health Kit | | | 0.00144 | 54700 | 78.77 | | |
| RCH.6 | Family Planning | 38 | Organizing Adolescent Health day | 0.02653 | 8 | 0.21 | | |
| | | 42 | Compensation for female sterilization (Provide breakup for cases covered in public facility, private facility. Enhanced Compensation Scheme (if applicable) additionally provide number of PPS done. Female sterilization done in MPV districts may also be budgeted in this head and the break up to be reflected) | 0.01000 | 2684 | 26.84 | | |
| | | | Female sterilization fixed day services | 0.10000 | 20 | 2.00 | | |

Activity-wise approvals for 2025-26

District: Nizamabad

| FMR code | Programme / Theme | ROP Sl. No. | Particulars | Unit Cost (Rs. in Lakhs) | Physical Target | SUM of Approved budget (Rs. In Lakhs) |
|----------|-------------------|----------------|--|-----------------------------|--------------------|--|
| RCH.7 | Nutrition | | Laparoscopes | 0.04000 | 10 | 0.40 |
| | | 43 | Compensation for male sterilization/NSV (Provide breakup for cases covered in public facility, private facility. Male sterilization done in MPV districts may also be budgeted in this head and the break up to be reflected) | 0.01500 | 106 | 1.59 |
| | | | Male Sterilization fixed day services | 0.10000 | 5 | 0.50 |
| | | 44 | Compensation for IUCD insertion at health facilities (including fixed day services at SHC and PHC) [Provide breakup: Private Sector] | 0.00020 | 326 | 0.07 |
| | | | PAIUCD Services: Compensation to beneficiary per PAIUCD insertion | 0.00300 | 29 | 0.09 |
| | | | PPIUCD services: Compensation to beneficiary for PPIUCD insertion | 0.00300 | 200 | 0.60 |
| | | 45 | Injectable contraceptive incentive for beneficiaries | 0.00100 | 1000 | 1.00 |
| | | | Training of Medical officers (Injectable Contraceptive Trainings) | 0.20000 | 1 | 0.20 |
| | | 48 | FP-LMIS training | 0.52000 | 1 | 0.52 |
| | | 49 | IEC & promotional activities for Vasectomy Fortnight celebration | 0.30000 | 1 | 0.30 |
| | | | IEC & promotional activities for World Population Day celebration | 0.20000 | 1 | 0.20 |
| | | 50 | Any other (Condom Boxes) | 0.01000 | 66 | 0.66 |
| | | | ASHA incentive under ESB scheme for promoting spacing of births | 0.00500 | 998 | 4.99 |
| | | | FP review meetings (As per Hon'ble SC judgement) | 0.10000 | 1 | 0.10 |
| | | | 52 Albendazole Tablets for non-pregnant & non-lactating women in Reproductive Age (20-49 years) | 0.00002 | 85160 | 1.45 |
| | | | Albendazole tablets for pregnant women | 0.00002 | 31490 | 0.54 |
| | | | Anaemia Mukh Bharat | 0.30000 | 1 | 0.30 |
| | | | Any other Drugs & Supplies (Inj Ferric Carboxymaltose for Management of postnatal / lactating mothers with severe anaemia) | 0.01800 | 1760 | 31.68 |
| | | | Folic Acid Tablets (400 mcg) for Pregnant & Lactating Mothers | 0.00000 | 3000000 | 3.32 |
| | | | IFA syrups (with auto dispenser) for children (6- 60 months) | 0.00013 | 294742 | 38.32 |
| | | | IFA tablets (IFA WIFS Junior tablets- pink sugar coated) for children (5-10 yrs.) | 0.00000 | 5926800 | 17.78 |
| | | | IFA tablets for non-pregnant & non-lactating women in Reproductive Age (20-49 years) | 0.00000 | 1000000 | 3.00 |
| | | | IFA tablets for Pregnant & Lactating Mothers | 0.00000 | 10000000 | 30.00 |
| | | | Procurement of Iron sucrose for Pregnant women | 0.00016 | 18620 | 2.98 |
| | | | 53 Albendazole Tablets for (10-19 years age group) | 0.00002 | 418478 | 7.11 |
| | | | Albendazole Tablets for children (5-10 yrs.) | 0.00002 | 342458 | 5.82 |
| | | | Albendazole Tablets for children (6-60months) | 0.00002 | 311770 | 5.30 |
| | | | Incentive for National Deworming Day for mobilising out of school children | 0.00200 | 1207 | 2.41 |
| | | | Media Mix of Mid Media/ Mass Media | 0.27273 | 1 | 0.27 |
| | | | Printing of IEC materials and reporting formats etc. for National Deworming Day | 0.30303 | 1 | 0.30 |
| | | | 54 Incentive for referral of SAM cases to NRC and for follow up of discharge SAM children from NRCs | 0.00300 | 303 | 0.91 |
| | | | Nutritional Rehabilitation Centres (NRC) | 0.06060 | 1 | 0.06 |
| | | | Operating expenses for NRCs | 17.60000 | 1 | 17.60 |
| | | | 55 Vitamin A syrup | 0.00160 | 6142 | 9.83 |

Activity-wise approvals for 2025-26

District: Nizamabad

| FMR code | Programme / Theme | ROP Sl. No. | Particulars | Unit Cost (Rs. in Lakhs) | Physical Target | SUM of Approved budget (Rs. In Lakhs) |
|----------|---|----------------|--|-----------------------------|-------------------------------|--|
| RCH.8 | National Iodine Deficiency Disorders Control Programme (NIDDCP) | 56 | 4 days Trainings on IYCF for MOs, SNs, ANMs of all DPs and SCs (ToT, 4 days IYCF Trainings & 1 day Sensitisation on MAA Program) | 0.50000 | 1 | 0.50 |
| | | | ASHA incentive under MAA programme @ Rs 100 per ASHA for quarterly mother's meeting | 0.00400 | 1207 | 4.83 |
| | | 57 | Others (LMUs) | 0.00002 | 21212 | 0.32 |
| | | 58 | Incentive for IDCF for prophylactic distribution of ORS to family with under-five children. | 0.00100 | 1207 | 1.21 |
| | | | ORS | 0.00003 | 203410 | 6.10 |
| | | | Zinc | 0.00000 | 527364 | 1.58 |
| | | 61 | Monitoring and Award/ Recognition for MAA programme | 0.10000 | 1 | 0.10 |
| | | 62 | ASHA Incentive under NIDDCP | 0.00300 | 1212 | 3.64 |
| | | | Health Education & Publicity for NIDDCP | 0.40000 | 1 | 0.40 |
| | | NDCP.2 | National Vector Borne Disease Control Programme (NVBDCP) | 64 | ACT (For Non Project states) | 0.00048 |
| | Any other (please specify) | | | 0.40000 | 1 | 0.40 |
| | ASHA Incentive/ Honorarium for Malaria and LLIN distribution | | | 0.00025 | 9631 | 2.44 |
| | Biological and Environmental Management through VHSC | | | 0.01000 | 15 | 0.15 |
| | Chloroquine phosphate tablets | | | 0.00001 | 2000 | 0.02 |
| | General & Focal spray | | | 1.00000 | 1 | 1.00 |
| | IEC/BCC for Malaria | | | 22.50000 | 0 | 0.61 |
| | Larvivorous Fish support | | | 0.10000 | 1 | 0.10 |
| | Monitoring , Evaluation & Supervision & Epidemic Preparedness (Only Mobility Expenses) | | | 1.98000 | 1 | 1.98 |
| | Primaquine tablets 2.5 mg | | | 0.00001 | 1500 | 0.01 |
| | Primaquine tablets 7.5 mg | | | 0.00001 | 1000 | 0.01 |
| | RDT Malaria – bi-valent (For Non Project states) | | | 0.00012 | 2500 | 0.29 |
| | State Task Force, State Technical Advisory Committee meeting, District coordination meeting, Cross border meetings Sub National Malaria Elimination Certification process (Malaria) | | | 0.15580 | 1 | 0.16 |
| | Training / Capacity Building (Malaria) | | | 0.77670 | 1 | 0.78 |
| 66 | Procurement of Insecticides (Technical Malathion/Cyphenothrin) | | | 0.00555 | 150 | 0.83 |
| 67 | ASHA Incentive for Dengue and Chikungunya | | | 0.01000 | 1308 | 13.08 |
| | Dengue & Chikungunya: Vector Control, environmental management & fogging machine | | | 0.50000 | 20 | 10.00 |
| | Dengue NS1 antigen kit | | | 0.08904 | 25 | 2.23 |
| | Epidemic preparedness (Dengue & Chikungunya) | | | 0.50000 | 1 | 0.50 |
| | IEC/BCC for Social mobilization (Dengue and Chikungunya) | | | 0.50000 | 1 | 0.50 |
| | Pyrethrum extract 2% for spare spray | 0.01300 | 100 | 1.30 | | |
| | Sentinel surveillance Hospital recurrent | 1.00000 | 1 | 1.00 | | |
| | Temephos, Bti (AS) / Bti (wp) (for polluted & non polluted water) | 0.00908 | 100 | 0.91 | | |
| | Test kits (Nos.) to be supplied by Gol (kindly indicate numbers of ELISA based NS1 kit and Mac ELISA Kits required separately) | 0.11150 | 20 | 2.23 | | |
| | Training / Workshop (Dengue and Chikungunya) | 0.30147 | 1 | 0.30 | | |

Activity-wise approvals for 2025-26

District: Nizamabad

| FMR code | Programme / Theme | ROP Sl. No. | Particulars | Unit Cost (Rs. in Lakhs) | Physical Target | SUM of Approved budget (Rs. In Lakhs) |
|----------|--|----------------|--|-----------------------------|--------------------|--|
| NDCP.3 | National Leprosy Eradication Programme (NLEP) | 68 | Honorarium for Drug Distribution including ASHAs and supervisors involved in MDA | 0.00600 | 423 | 2.54 |
| | | | Lymphatic Filariasis: Morbidity Management | 0.00500 | 1818 | 9.09 |
| | | | Post MDA Surveillance (for those districts which have cleared TAS) | 0.07500 | 7 | 0.53 |
| | | | Sub-national Disease Free Certification: Lymphatic Filariasis | 5.00000 | 1 | 5.00 |
| | | 69 | Aids/Appliance to Leprosy patients | 0.17000 | 1 | 0.17 |
| | | | ASHA Incentive for Treatment completion of MB cases (@ Rs 600) | 0.00600 | 19 | 0.11 |
| | | | ASHA Incentive for Treatment completion of PB cases (@ Rs 400) | 0.00400 | 13 | 0.05 |
| | | | Incentive for ASHA/AWW/Volunteer/etc for detection of Leprosy (Rs 250 for detection of an early case before onset of any visible deformity, Rs 200 for detection of new case with visible deformity in hands, feet or eye) | 0.02108 | 1207 | 25.44 |
| | | | Supportive drugs, lab. Reagents | 0.48000 | 1 | 0.48 |
| | | 70 | Leprosy footwear | 0.00400 | 105 | 0.42 |
| | | | Welfare allowance to patients for RCS | 0.12000 | 3 | 0.36 |
| | | 72 | Capacity building under NLEP | 0.50000 | 1 | 0.50 |
| | | | District Cell - Consumables | 0.35000 | 1 | 0.35 |
| | | | Mobility Support: District Cell | 1.50000 | 1 | 1.50 |
| | Office operation & Maintenance - District Cell | 0.30000 | 1 | 0.30 | | |
| | Travel expenses - Contractual Staff at District level | 0.25000 | 1 | 0.25 | | |
| NDCP.4 | National Tuberculosis Elimination Programme (NTEP) | 73 | Civil Works under TB program | 4.00000 | 1 | 4.00 |
| | | | CME (Medical Colleges) | 0.05000 | 2 | 0.10 |
| | | | Community engagement activities | 7.78000 | 1 | 7.78 |
| | | | Drug transportation charges | 0.50000 | 1 | 0.50 |
| | | | Procurement of sleeves and drug boxes | 2.31000 | 1 | 2.31 |
| | | | | 8.63000 | 1 | 8.63 |
| | | | Research for medical colleges | 0.30000 | 1 | 0.30 |
| | | | Sample collection & transportation charges | 1.00000 | 1 | 1.00 |
| | | | State/District TB Forums | 0.11000 | 1 | 0.11 |
| | | | Sub-national Disease Free Certification: Tuberculosis | 12.13000 | 1 | 12.13 |
| | | | Trainings under NTEP | 0.05000 | 14 | 0.70 |
| | | | | 1.00000 | 1 | 1.00 |
| | | | Treatment Supporter Honorarium (Rs 1000) | 0.01000 | 1748 | 17.48 |
| | | | Vehicle hiring for drug transportation | 1.00000 | 1 | 1.00 |
| | | 74 | TB Patient Nutritional Support under Nikshay Poshan Yojana | 93.81000 | 1 | 93.81 |
| | | 75 | Any PPM-PP/NGO Support | 4.00000 | 1 | 4.00 |
| | | | Incentive for informant (Rs 500) | 0.00499 | 623 | 3.11 |
| | | | Multi-sectoral collaboration activities | 1.06000 | 1 | 1.06 |
| | | | Public Private Support Agency (PPSA) | 39.37000 | 1 | 39.37 |
| | | 76 | Diagnosis and Management under Latent TB Infection Management | 4.56000 | 1 | 4.56 |
| 77 | Laboratory Materials for TB program | 9.10000 | 1 | 9.10 | | |
| | Treatment Supporter Honorarium (Rs 5000) | 0.05000 | 102 | 5.10 | | |
| 78 | ACSM (State & district) | 1.36000 | 1 | 1.36 | | |
| | TB Harega Desh Jeetega' Campaign | 2.12000 | 1 | 2.12 | | |
| NDCP.6 | National Rabies Control Programme (NRCP) | 84 | IEC/BCC under NRCP: Rabies Awareness and Do's and Don'ts in the event of Animal Bites | 1.00000 | 1 | 1.00 |
| | | | Monitoring and surveillance (Review meetings, Travel) under NRCP | 0.50000 | 1 | 0.50 |
| | | | Printing of formats for Monitoring and surveillance | 0.50000 | 1 | 0.50 |

Activity-wise approvals for 2025-26

District: Nizamabad

| FMR code | Programme / Theme | ROP Sl. No. | Particulars | Unit Cost (Rs. in Lakhs) | Physical Target | SUM of Approved budget (Rs. In Lakhs) |
|----------|---|----------------|---|-----------------------------|--------------------|--|
| NCD.1 | National Program for Control of Blindness and Vision Impairment (NPCB+VI) | | Strengthen Animal bite and human rabies cases surveillance data entry support | 0.60000 | 1 | 0.60 |
| | | | Trainings of Medical Officers and Health Workers under NRCP | 0.19500 | 1 | 0.20 |
| | | 87 | Assistance for consumables/drugs/medicines to the Govt./District Hospital for Cat sx etc | 0.01000 | 1000 | 10.00 |
| | | 88 | Reimbursement for cataract operation for NGO and Private Practitioners as per NGO norms @ Rs. 2000 | 0.02000 | 700 | 14.00 |
| | | 93 | Screening and free spectacles to school children | 0.00250 | 400 | 1.00 |
| NCD.2 | National Mental Health Program (NMHP) | 96 | Training of PMOA under NPCB | 0.02424 | 11 | 0.27 |
| | | 97 | Miscellaneous/ Travel | 2.40000 | 1 | 2.40 |
| | | | Procurement of Mental Health Drugs for PHCs | 3.00000 | 1 | 3.00 |
| NCD.3 | National Programme for Health Care for the Elderly (NPHCE) | 99 | Training of PHC Medical Officers, Nurses, Paramedical Workers & Other Health Staff working under NMHP | 0.50000 | 1 | 0.50 |
| NCD.3 | National Programme for Health Care for the Elderly (NPHCE) | 99 | Training of doctors and staff at DH level under NPHCE | 0.05000 | 1 | 0.05 |
| NCD.4 | National Tobacco Control Programme (NTCP) | 104 | Coverage of Public School and Pvt School | 0.05000 | 1 | 0.05 |
| | | | Training of PRI's representatives/ Police personnel/ Teachers/ Transport personnel/ NGO personnel/ other stakeholders | 0.25000 | 1 | 0.25 |
| NCD.5 | National Programme for Prevention and Control of Diabetes, Cardiovascular Disease and Stroke (NPCDCS) | 106 | IEC/BCC for NTCP | 0.05000 | 1 | 0.05 |
| | | 107 | District NCD Clinic | 2.50000 | 1 | 2.50 |
| | | | District NCD Clinic: Strengthening of lab, Mobility, Miscellaneous & Contingencies | 1.00000 | 1 | 1.00 |
| | | | Drugs & consumables for Diabetes, Hypertension, | 0.00008 | 782569 | 66.05 |
| | | 108 | CHC NCD Clinic | 0.32000 | 9 | 2.88 |
| | | | CHC NCD Clinic: Mobility , Miscellaneous & Contingencies | 1.00000 | 9 | 9.00 |
| | | | NCD Clinics at CHC/SDH | 10.00000 | 9 | 90.00 |
| | | 109 | Innovation STEMI | 1.00000 | 1 | 1.00 |
| | | 110 | COPD Drugs and Consumables in whole district | 0.00002 | 782569 | 13.62 |
| | | | District NCD Cell | 0.70000 | 1 | 0.70 |
| NCD.7 | National Program for Climate Change and Human Health (NPCCHH) | | District NCD Cell (TA,DA, POL) | 5.00000 | 1 | 5.00 |
| | | 114 | IEC on Climate Sensitive Diseases at Block , District and State level – Air pollution, Heat and other relevant Climate Sensitive diseases | 0.72000 | 1 | 0.72 |
| | | | Printing activities for NPCCHH | 0.18000 | 1 | 0.18 |
| | | | Trainings of Medical Officers, Health Workers and Programme officers under NPCCHH | 0.30000 | 1 | 0.30 |
| NCD.8 | National Oral health programme (NOHP) | 115 | Dental consumables | 0.24000 | 5 | 1.20 |
| NCD.9 | National Programme on palliative care (NPPC) | 119 | Any other (GPS monitoring) | 0.12000 | 1 | 0.12 |
| | | | Miscellaneous including Travel/ POL/ Stationary/ Communications/ Drugs etc. | 9.00000 | 1 | 9.00 |
| | | | Palliative care program | 8.00000 | 1 | 8.00 |
| | | | Training of PHC Medical Officers, nurses, Paramedical Workers & Other Health Staff under NPPC | 1.00000 | 1 | 1.00 |

Activity-wise approvals for 2025-26

District: Nizamabad

| FMR code | Programme / Theme | ROP Sl. No. | Particulars | Unit Cost (Rs. in Lakhs) | Physical Target | SUM of Approved budget (Rs. In Lakhs) |
|----------|---|----------------|--|-----------------------------|--------------------|--|
| NCD.11 | National Programme for Prevention and Control of Deafness (NPPCD) | 122 | Trainings at CHC/Sub-Divisional Hospital | 0.06000 | 9 | 0.54 |
| | | | Trainings at District Hospital | 0.15000 | 1 | 0.15 |
| HSS(U).2 | Community Engagement | 130 | Incentives for routine activities (NUHM-Non-Metro) | 0.24000 | 255 | 61.20 |
| HSS(U).4 | Quality Assurance | 139 | Quality Assurance incentives | 2.00000 | 3 | 6.00 |
| | | 140 | Kayakalp Assessments | 0.40000 | 1 | 0.40 |
| | | | Kayakalp Awards | 2.00000 | 1 | 2.00 |
| HSS(U).5 | HRH | 142 | Total HR (Urban) | 2.84402 | 117 | 332.75 |
| HSS(U).9 | Untied Grants | 149 | Government Building | 1.75000 | 6 | 10.50 |
| HSS.1 | Comprehensive Primary Healthcare (CPHC) | 152 | Telemedicine/ teleconsultation facility under Ayushman Bharat H&WC | 380.00000 | 0 | 11.40 |
| HSS.2 | Blood Services & Disorders | 156 | Blood Bank/Blood Storage Unit (BSU) Training | 0.12500 | 2 | 0.25 |
| | | | Consumables for blood services | 0.00250 | 1200 | 3.00 |
| | | | Equipment for Blood Banks/Blood storage units | 0.42368 | 4 | 1.69 |
| | | | Equipment for Day Care Centre | 0.50000 | 1 | 0.50 |
| HSS.3 | Community Engagement | 159 | ASHA incentives for routine activities | 0.21600 | 967 | 208.87 |
| | | | Supervision costs by ASHA facilitators(12 months) | 0.12000 | 60 | 7.20 |
| | | | Uniform | 0.02500 | 1207 | 30.18 |
| HSS.5 | Referral Transport | 171 | Emergency ambulance/Dial 108 -ALS-Agency owned | 29.41000 | 2 | 58.82 |
| | | 172 | Emergency ambulance/Dial 108 -BLS-Agency owned | 23.09544 | 11 | 254.05 |
| | | | Emergency ambulance/Dial 108 -BLS-Govt owned | 16.48656 | 5 | 82.43 |
| | | 174 | Other ambulances | 29.40000 | 1 | 29.40 |
| HSS.6 | Quality Assurance | 175 | Incentivisation on attainment of NQAS certification (Please provide details in Annexure) | 2.75000 | 12 | 33.00 |
| | | | Quality Assurance Certifications, Re-certification (National & State Certification) under NQAS | 14.00000 | 1 | 14.00 |
| | | 176 | Assessments | #DIV/0! | | 3.35 |
| | | | Biomedical Waste Management | 0.60000 | 32 | 19.20 |
| | | | Kayakalp Awards | 0.46875 | 32 | 15.00 |
| | | | Kayakalp Trainings | 0.30000 | 1 | 0.30 |
| HSS.7 | Other Initiatives to improve access | 180 | Paracetamol drops | 0.00008 | 35361 | 2.75 |
| | | | Paracetamol oral solution | 0.00007 | 70720 | 4.94 |
| HSS.8 | Inventory management | 184 | Comprehensive Bio-Medical Equipment Maintenance Programme | 34.93000 | 1 | 34.93 |
| HSS.9 | HRH | 185 | Total HR (Rural) | 1905.24000 | 1 | 1905.24 |
| | | 187 | Remuneration for CHOs | 4.80000 | 141 | 676.80 |
| HSS.11 | Technical Assistance | 194 | Medical Colleges (Any meetings) | 0.01000 | 4 | 0.04 |
| | | | Mobility Support - BPMU/Block | 3.96000 | 3 | 11.88 |
| | | | Mobility Support for DPMU/District (including SAANS supportive supervision) | 3.96000 | 3 | 11.88 |
| | | | Office Operation (Miscellaneous) | 1.87000 | 1 | 1.87 |
| | | | Supervision and Monitoring | 2.00000 | 1 | 2.00 |
| | | | Vehicle hiring | 3.74000 | 1 | 3.74 |
| | | | Vehicle Operation (Maintenance) | 0.11000 | 1 | 0.11 |
| | | | Vehicle Operation (POL) | 0.77294 | 17 | 13.14 |
| HSS.12 | IT interventions and systems | 195 | Mobility Support for HMIS & MCTS | 1.48000 | 1 | 1.48 |
| | | | Printing of HMIS Formats | 0.00002 | 47448 | 0.95 |
| | | | Training cum review meeting for HMIS & MCTS at Block level | 0.00100 | 2392 | 2.39 |
| | | | Training cum review meeting for HMIS & MCTS at District level | 0.00500 | 384 | 1.92 |
| HSS.14 | Untied Grants | 199 | SDH | 5.00000 | 8 | 40.00 |

